



## 2016年经济科学与管理工程国际学术会议 ( ESME 2016 )

尊敬的\_\_\_\_\_先生/女士，您好！

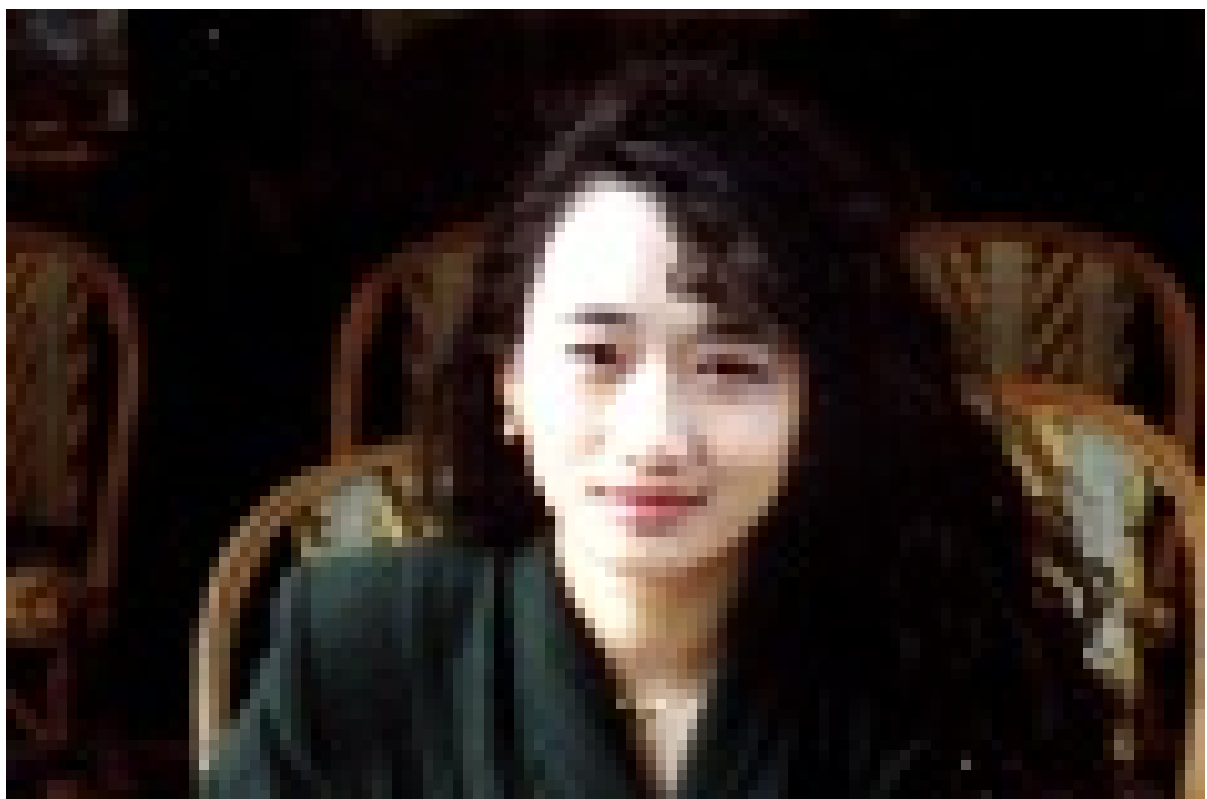
2016年经济科学与管理工程国际学术会议 ( ESME 2016 ) 将于2016年11月在桂林召开。

### 会议通知

2016经济科学与管理工程国际学术会议 ( ESME 2016 ) 将于2016年11月4至6日在广西桂林召开。ESME 2016欢迎会议代表把握这个无与伦比的机会，来与网络世界范围内的人才交流互动。我们诚挚的邀请您和您的同事在您的日历上立即标记好我们的会议，并安排计划前往桂林。

Welcome to the International Academic Conference on Economic Science and Management Engineering (ESME2016) will be held in Guilin, China, during November 4th-6th, 2016.. The mission of ESME2016 is to provide a great platform for researchers and other professionals from different countries to present their research results in economic science and management engineering. ESME2016 is an International Academic Conference and the experts of this kind of field from different areas will be invited to give specific speech yearly.Focused on the goal of being a successful international conference, ESME2016 is trying to give great opportunities to engineers, academicians and researchers to present their research. This conference provides chances for the participants to exchange new ideas and experiences to establish a better future.Gathering the dependable organization ability and reputation as well as the sponsors from all over the world, ESME2016 to support, encourage and provide a platform for researchers to present their research, to issue their thoughts and to seek the better prospect and advice during the conference.

### 会议嘉宾





Prof. Mei-Hsin Wang

Fellow of Royal Society of Chemistry, UK

CEO of Biomedical & Technology Applications Association

Intellectual Property Office, Graduate School Materials Science, National Yunlin University of Science & Technology, Taiwan

Education and Professional Experience:

Prof. Mei-Hsin Wang received her PhD in Chemistry from Imperial College, University of London under the supervision of Sir./Prof. CW Rees, FRS CBE, she is the Fellow of Royal Society of Chemistry (UK), a Chartered Scientist certified by British Science Council, and Chartered Chemist certified by Royal Society of Chemistry (UK).

She is the founder and CEO for BioMedical Technology Application Association, an honorable member of the Professional Technical Committee in Shanghai Executive Licensing Agents Association, a research member of Cosmetic Society of Chemists UK, other memberships including American Chemical Society, Licensing Executive Society New Zealand, Korean Commercial Cases Association, Intellectual Property Association of Japan and The Indian Society of Criminology.

She also serves as 2014-2015 Vice Academic Chair of Licensing Executive Society International, 2014-2016 Academic Committee of International Trademark Association, Associate Editor of International Review of Law Computers and Technology, adjunct professor at Overseas Chinese University, National Taipei University of Technology, Wang-Chien Law School in Soochow University, Law School in Wuhan University, and Intellectual Property College in Nanjing University of Science & Technology; and visiting professor at National Law University Jodhpur and National Law University Delhi (India), Intellectual Property College of Xiangtan University, Nanjing University of Science & Technology, and law school of Central China Normal University (China).

Publications:

Prof. Mei-Hsin Wang recently published a book [Law, Politics and Revenue Extraction on Intellectual Property] with former-CAFC chief Judge Rader, former-Japanese IP High Court Chief Judge Iimura and Germany Federal Patent Court Judge Voitand ex-presidents of Licensing Executive Society International Prof. Goddar and Prof. Nachtraby Cambridge Scholars Publishing.



Prof. Jan Kazmierczak

Faculty of Organization and Management, Silesian University of Technology, Poland

Place of employment and position:

- Professor, Head of the Institute of Production Engineering, Silesian University of Technology, Faculty of Organization and Management
- Member of the Presidium of the Committee on Production Engineering, Polish Academy of Sciences

Recently(2007 – 2015):

Member of the Sejm (Parliament) of the Republic of Poland

Chairman of the Parliamentary Sub-Committee on Science and Higher Education

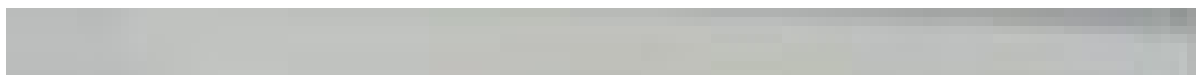
Vice Chairman of the Parliamentary Committee on Innovation and New Technologies

Areas of Scientific Interests:

Production Engineering, Innovation Management, Assessment of Social Impact of New Technologies and Products (Technology Assessment - TA), Maintenance Management, Engineering of Acoustical Environment, Computer-Aided Engineering.

Areas of Research Projects:

expertise in the area of implementing and assessing innovations, management of data from maintenance of technical systems, implementations of tools of CMMs class (Computerized Maintenance Management systems) and ERP (Enterprise Resource Planning) in industrial practice, analysis of vibroacoustic hazards in labor environment, development of acoustic maps using GIS technology.





Prof. LIU Yumin

Business School of Zhengzhou University, China

Education:

2001.09-2004.06 Nankai University

1985.09-1988.06 Zheng zhou University

1978.02-1981.12 Zheng zhou University

Work Experience:

2001.02- present Business School of Zhengzhou University

1998.10-1998.12 Hansung University, Visiting Professor

2004.02-2004.04 University of Technology Sydney, Visiting Professor

2008.10-2008.12 Harvard University, MIT Sloan School of Management, Visiting Professor

2010.02-2010.04 University of Tokyo, Visiting Professor

Publication:

- Liu Yumin,Zhou Haofei,Recognition of quality abnormal patterns for dynamic process based on multi-features with PSO-MSVM[J].Application Research of Computers,2015,03:713-716.
- Liu Yumin,Zhou Haofei,Dynamic process anomaly detection based on multi-features hybrid with support vector machine[J].Computer Integrated Manufacturing System, 2015,10:2637-2643.
- Liu Yumin,Zhou Haofei,On-line Quality Intelligent Diagnosis for Multi-variety and Small-batch Dynamic Process Based on MSVM[J].China Mechanical Engineering,2015,17:2356-2363.



Prof. Yang XU

Department of Information Management, Peking University, China

Prof. Yang XU received his Ph.D. from Ecole Centrale de Nantes , France, in 2010. Since 2011, he has joined Peking University and is now associate professor in the Department of Information Management. He is visiting professor in Tsukuba University (Japan) and Université Toulouse III - Paul Sabatier (France).

He published over 50 peer-reviewed scientific papers and many of them are published in outstanding SCI/SSCI index journals such as Knowledge-Based Systems, Expert Systems, International Journal of Computer Integrated Manufacturing, Knowledge Organization, CIRP Annals, etc. He is in charge of several scientific projects of national level, or supported by enterprises such as Tencent. His research interests include industrial engineering, knowledge management, production economics, etc.



Prof. Egon Müller

Director of the Institute of Industrial Sciences and Factory Systems, Chemnitz University of Technology, German.

Work Experience:

- 2002 - ongoing: Professor and the Dean of the faculty, Department of Factory Planning and Factory Management, Technische Universität Chemnitz, Chemnitz, Germany
- 1992-2002: Professor, University of Applied Sciences in Zwickau, Zwickau, Germany
- 1990-1992: Director, The Department of Machine Construction Institute of Technology, Zwickau, Germany
- 1989-1990: Technical Director, Institute of Technology, Zwickau, Germany

- 1985-1989: Leading position at IFA state combine, Germany

#### Memberships:

- Member of the HAB (Scientific Society of Industrial Management Germany),
- Member of the European Academy for Industrial Management (AIM),
- Member of the GfSE (Society for Systems Engineering),
- Expert on best environmental performance in car manufacturing from the European Commission's Joint Research Centre (JRC)
- Refereeing activities on Production Engineering Research – DFG – (German Research Foundation / Deutsche Forschungsgemeinschaft) and VDI (Association of German Engineers) - Technical Division "Factory Planning" ;
- Reviewer for international journals, conferences, and serves as a member of several scientific advisory panels (Taylor&Francis, ICPR,FAIM,CARV...).

#### 会议门票

参会费用：1000元/人，含会议午餐，会议物资，论文集。

