

# 认知时代的安全体系

李承達(Chenta Lee)

IBM全球首席资讯安全架构师

# 为什么要谈认知安全？

- 我们在人工智能上有突破？
- 我们在量子运算上有突破？
- 认知安全其实是在对的地方，对的使用方法，去运用既有的人工智能技术

面对新型态的威胁，我们必须全方位了解非结构性的资料

80%  
of the world's data  
has been  
invisible.

Until now.

# 世界上百分之八十的资料是没有结构性的

## HEALTHCARE

**99%**

growth by 2017

**88%**

unstructured



## GOVERNMENT & EDUCATION

**94%**

growth by 2017

**84%**

unstructured



## UTILITIES

**93%**

growth by 2017

**84%**

unstructured



## MEDIA

**97%**

growth by 2017

**82%**

unstructured



# 认知运算开创了资讯安全的新世代



堡垒式防御

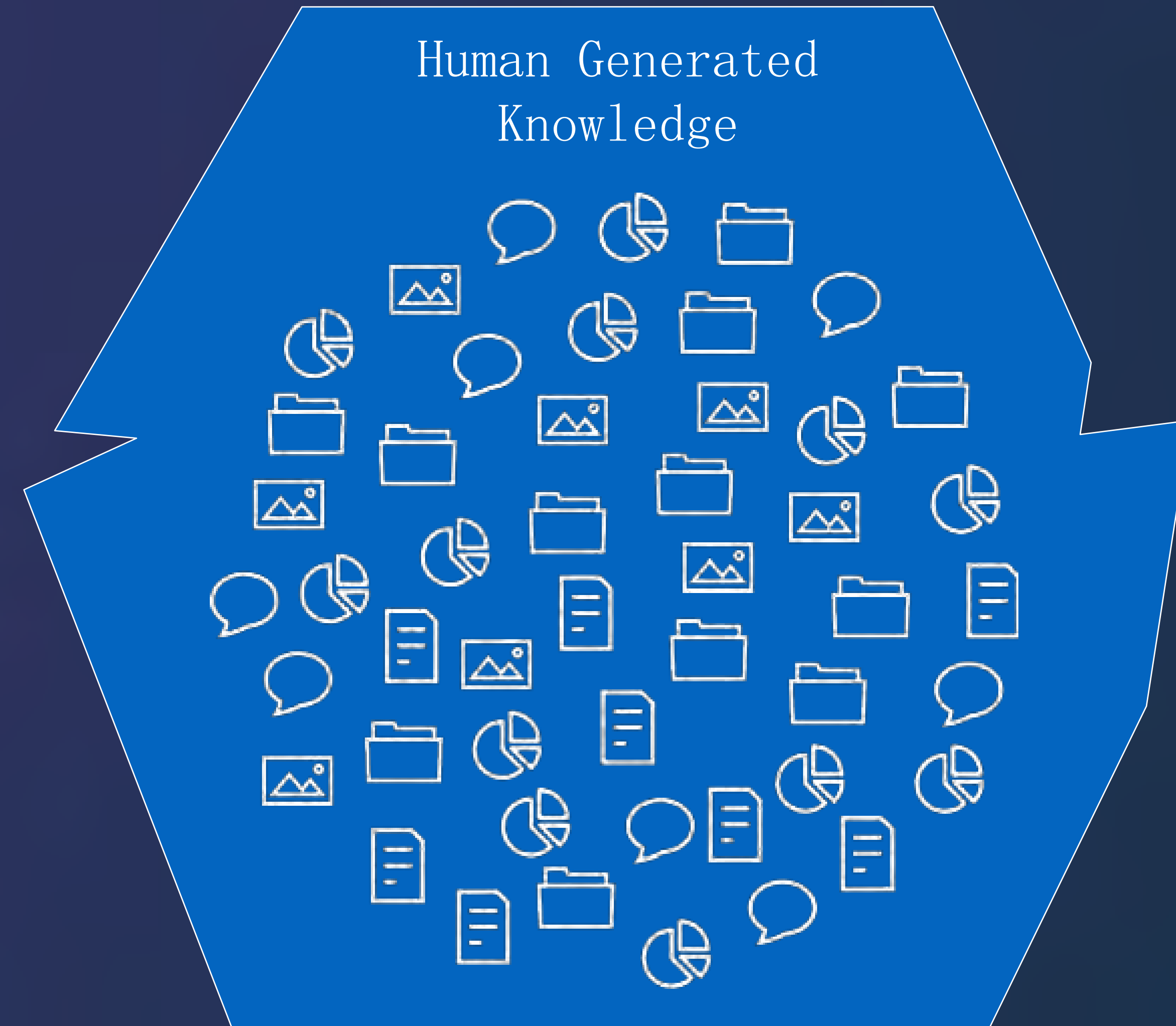


智能安全  
深度整合



认知运算  
云计算  
协同抵御

# 冰山下的那些事 - 大量的安全资讯



**A universe of security knowledge  
Dark to your defenses**

我们只利用了冰山下的百分之八的资料

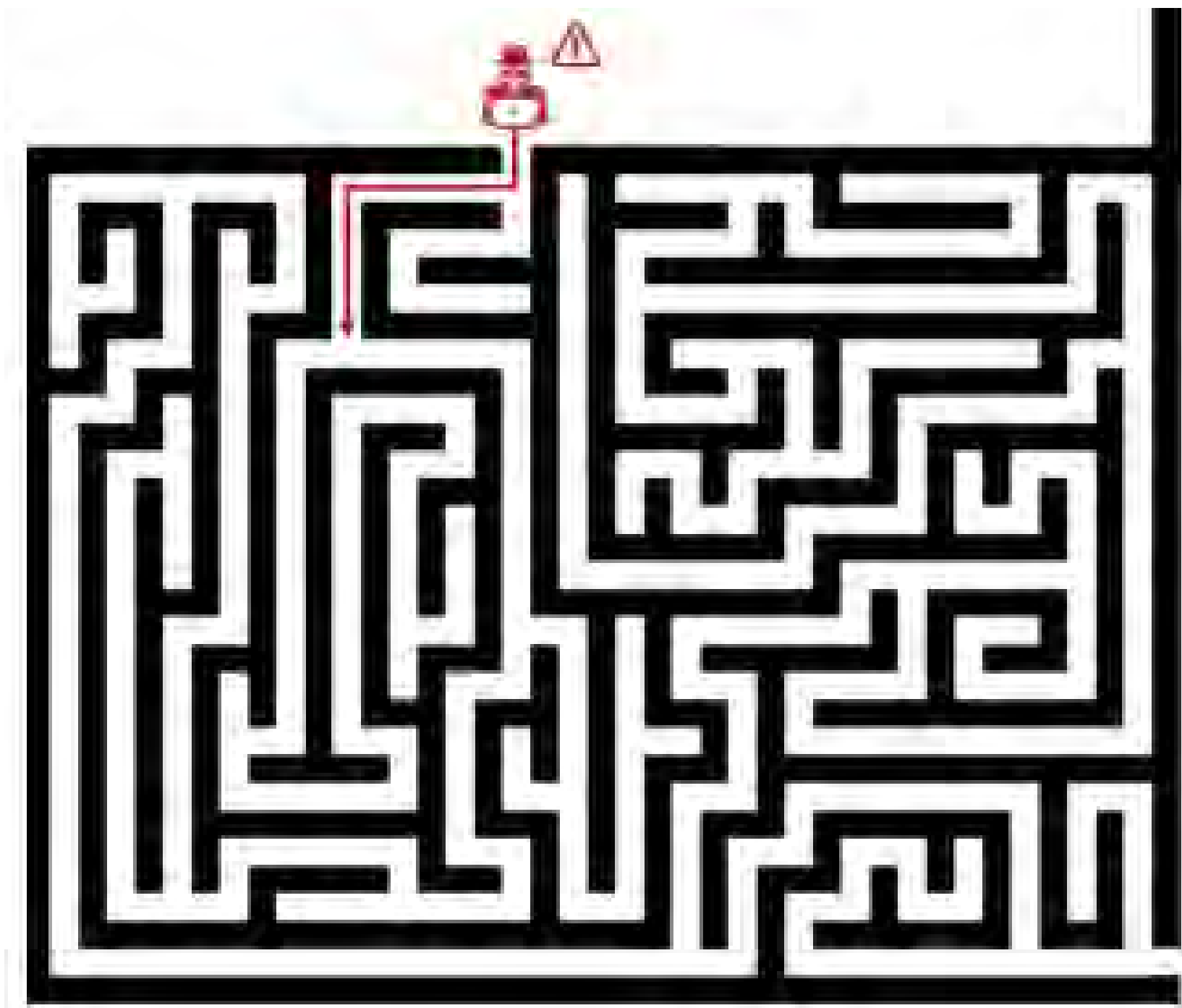
七十二萬  
十八萬  
一萬

security  
blogs / year  
security related  
news articles /  
year  
security research  
papers / year

- Industry publications
- Forensic information
- Threat intelligence commentary
- Analyst reports
- Conference presentations
- News sources
- Newsletters
- Tweets
- Wikis

# 知己不知彼 – 道高一尺魔高一丈

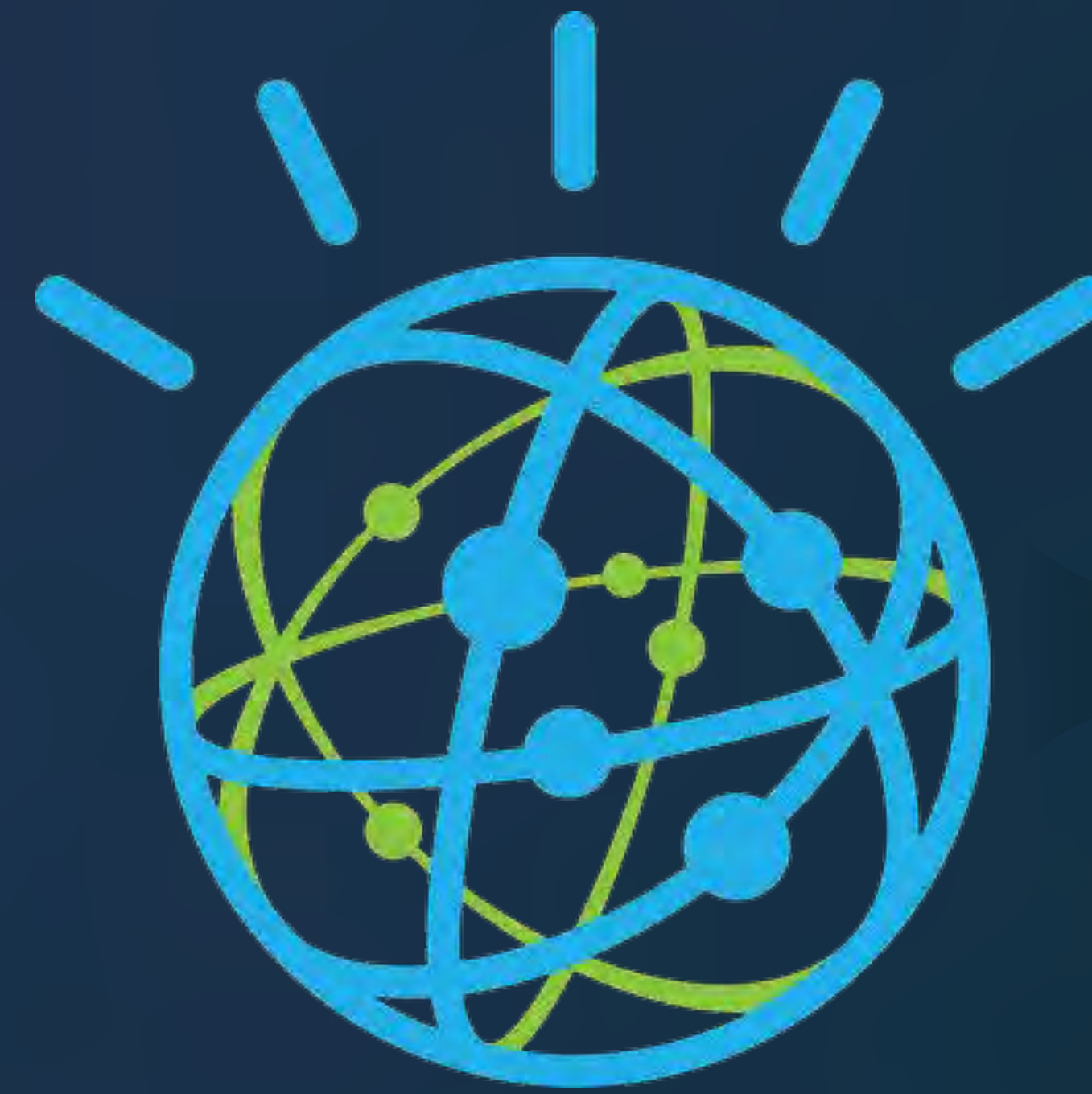
We think we  
blocked  
hackers



What  
actually  
happen is  
that we  
cannot trace  
hackers  
because we  
are in the  
maze



# 描述黑客的黑资料



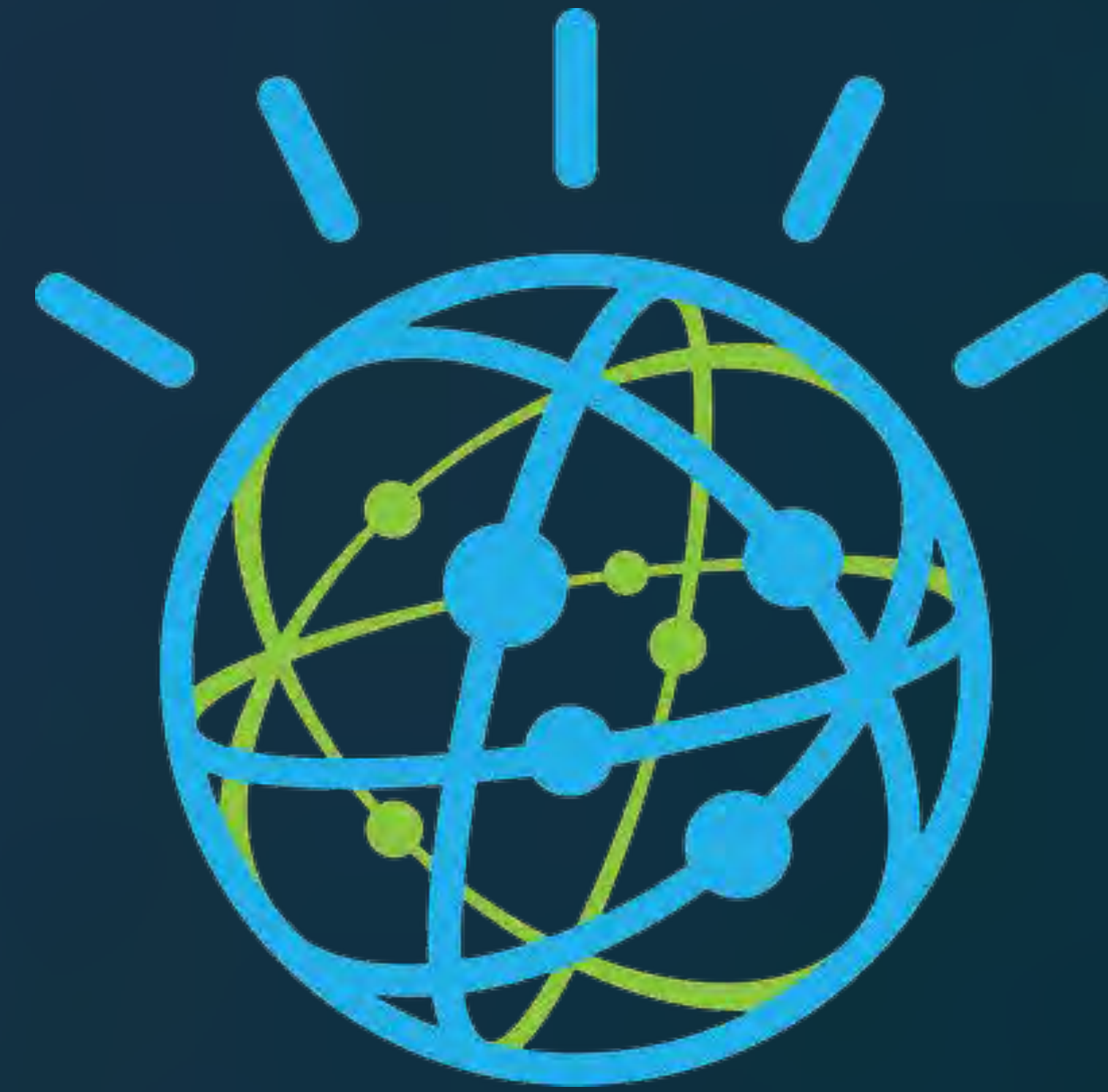
# 认知运算到底能做什么事情？

Facts  
(unstructured data) + Questions = Answer

Hi Watson, I see 300 access from IP 5.6.7.8, should I be worry about it?

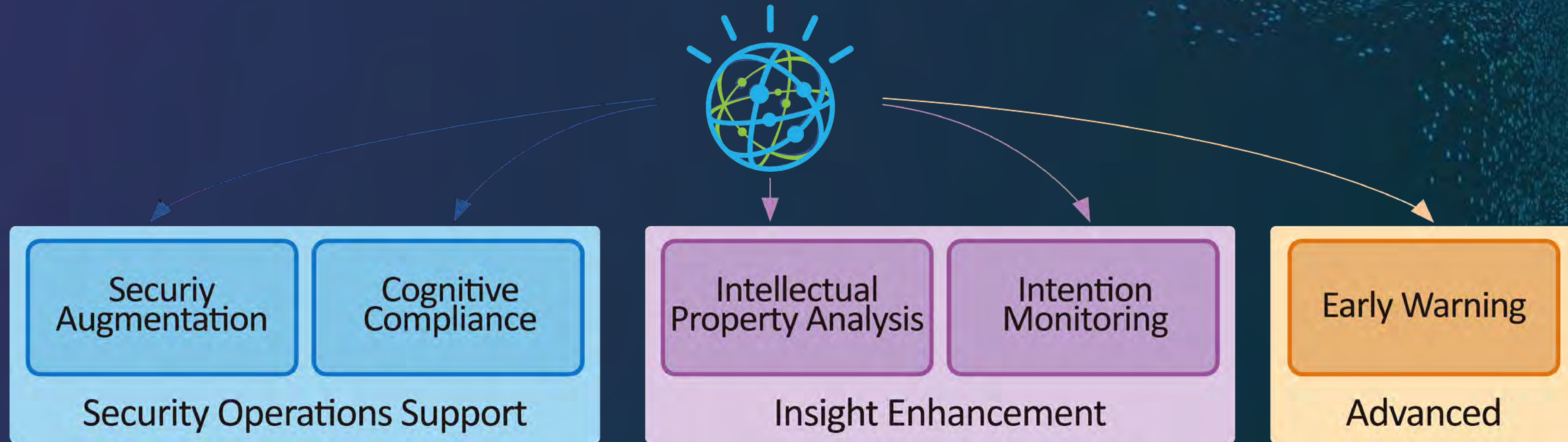
Hi Watson, how many user download file xyz will go to abc.com/test.php within 24 hours?

Hi Watson, how many attacks are related to 1.2.3.4 in health care industry in past 12 hours?





# 关键在于用对的方法使用认知运算



# 认知体系下的资讯安全架构

认知安全

大数据分析

深度的情资整合

专业资安团队的服务

行业的专精

传统资讯安全部署

“真正的吸收了解所有的情资并加以运用”

“找到所有有威胁的情报”

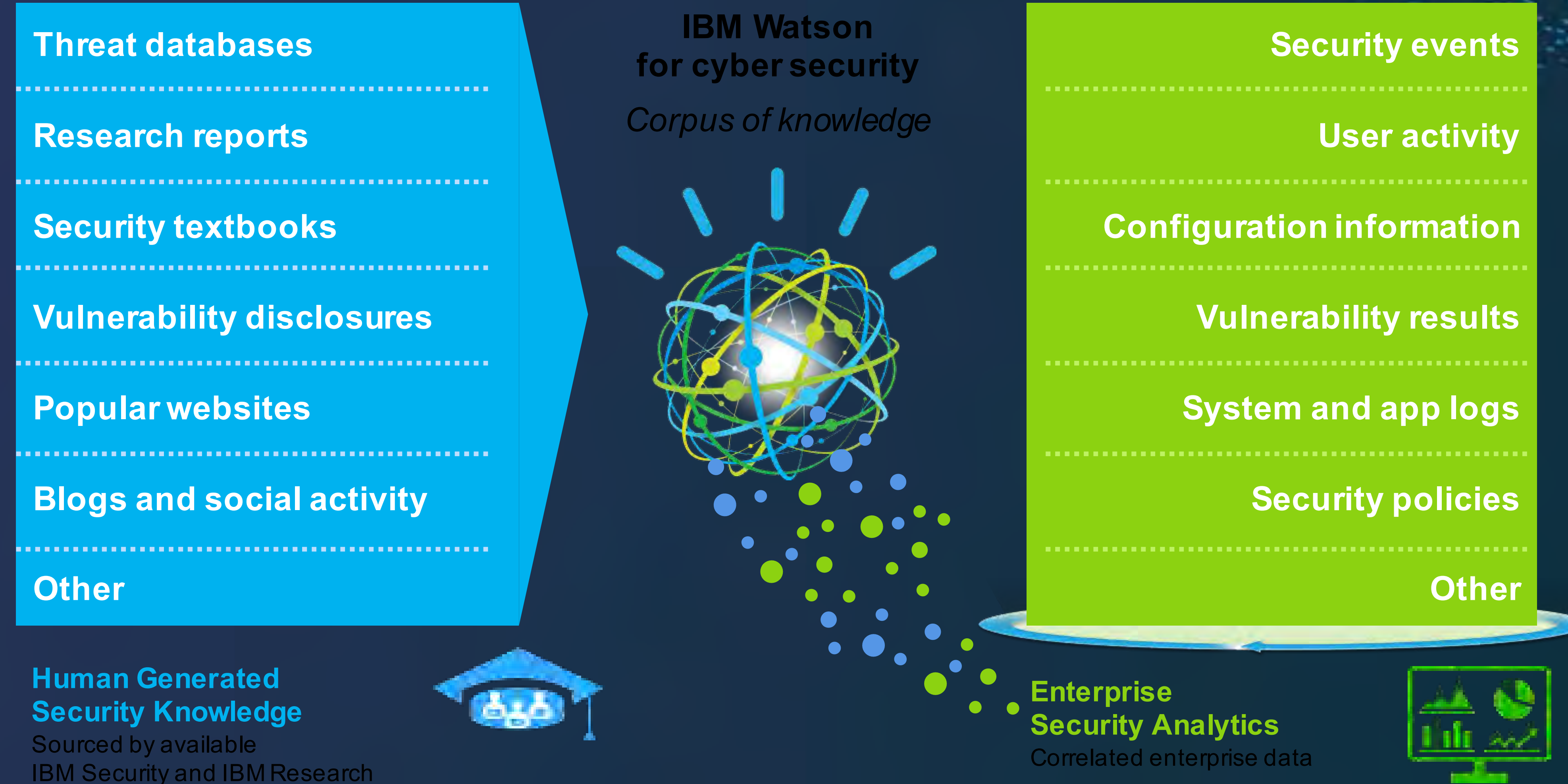
“快速的识别真正的威胁”

“我很忙，我只想知道真的有威胁的事件”

“隔壁银行的资讯安全团队最近在忙啥？”

”告诉我最即时的资安状态”

# Watson 提供了更深一层的见解



# 认知运算加强了感知能力

## 更深层的资安见解

Context and Intent

Relationships

Security Intelligence

Corporate Data

Public Data

Aliases

Associates

Threat Data  
(STIX/TAXII)

Data Feeds  
(syslog, LEEF,  
IPFIX, SNMP, APIs)

Thanks