

ANSYS



仿真
新时代

2017 ANSYS用户技术大会

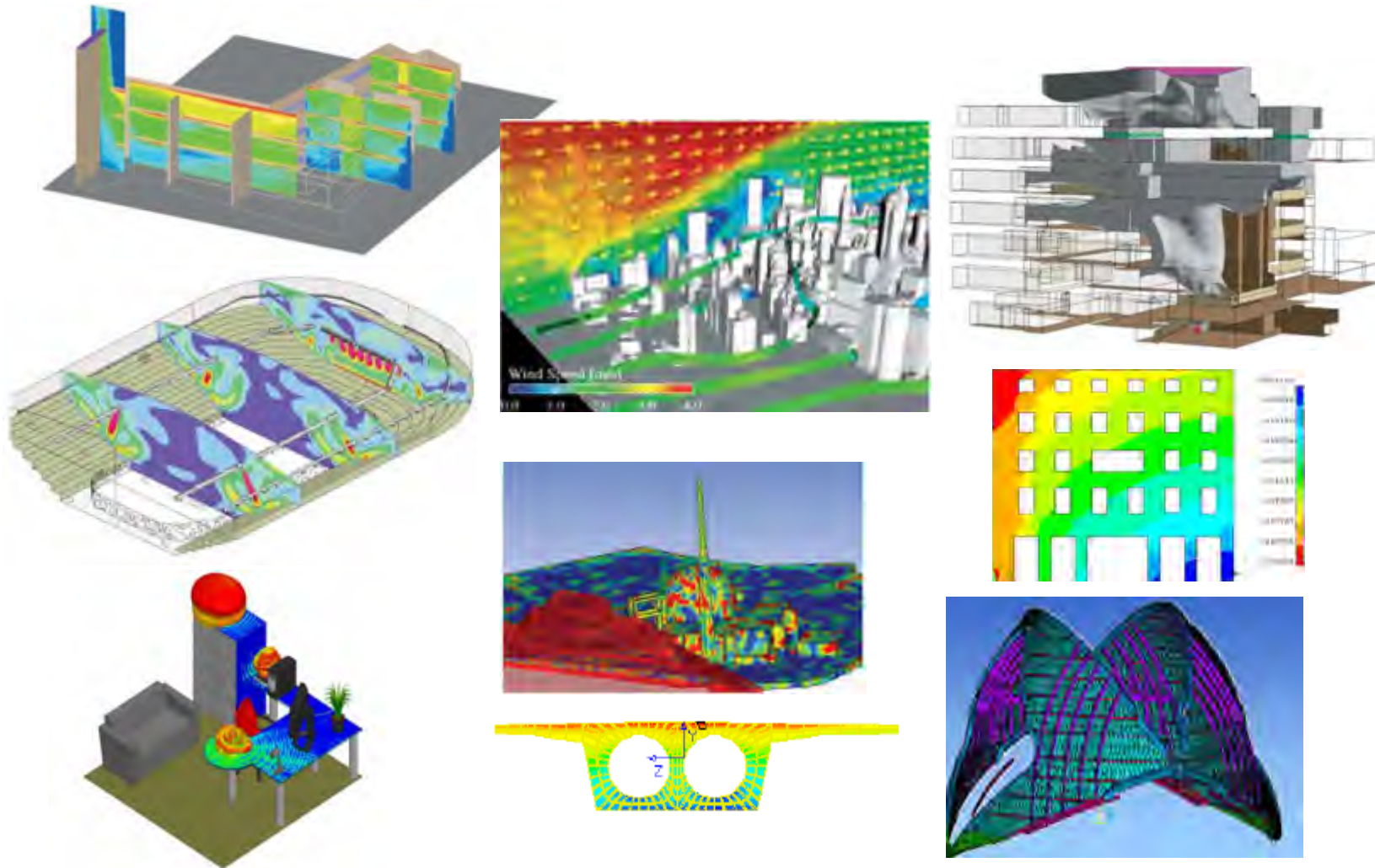
中国·烟台

建筑行业ANSYS 系列工具仿真概述

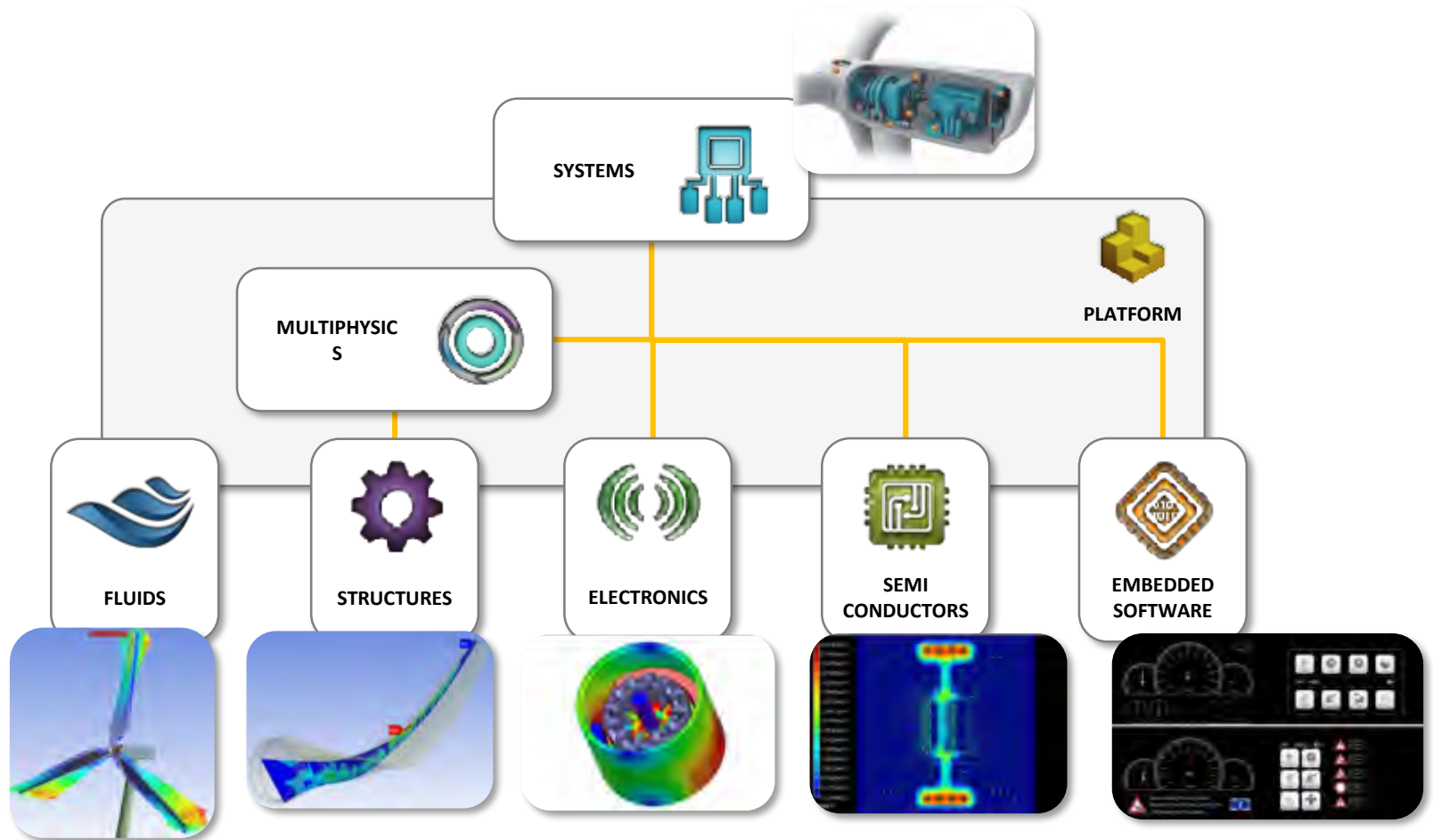
杨帆 / 工程师

ANSYS

ANSYS 仿真在建筑设计中的应用

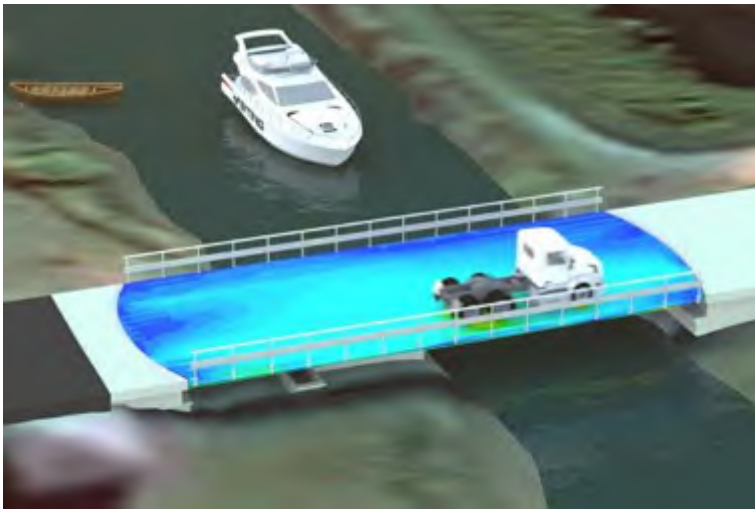
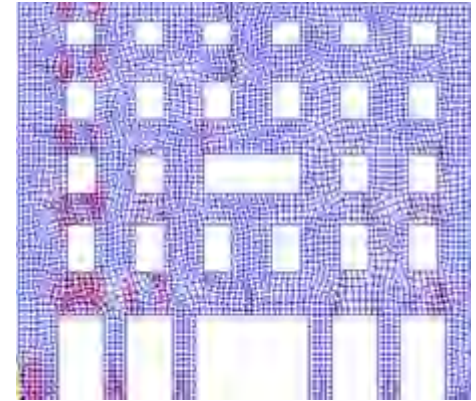
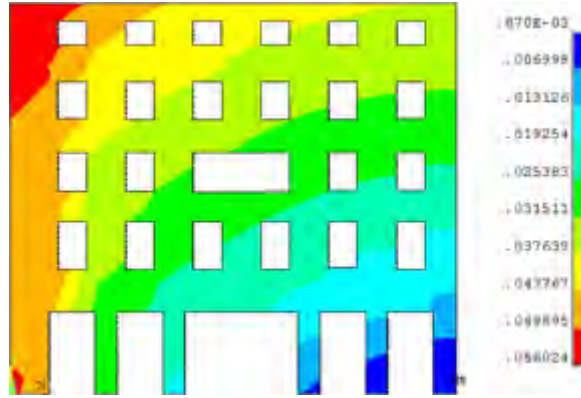
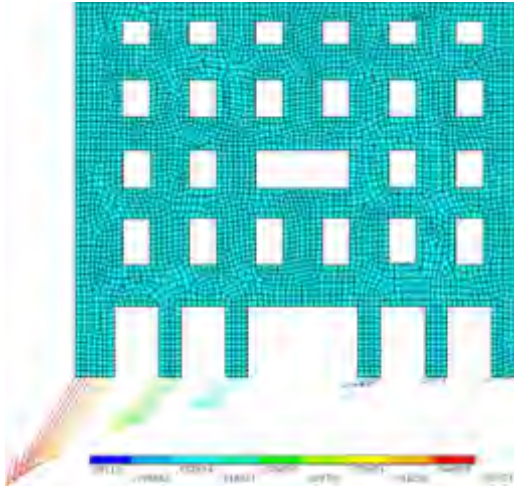


ANSYS 仿真平台

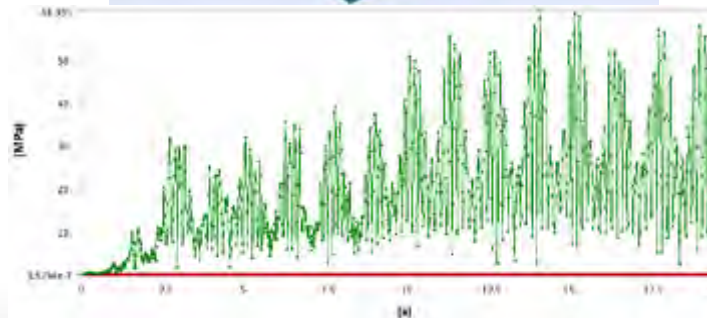
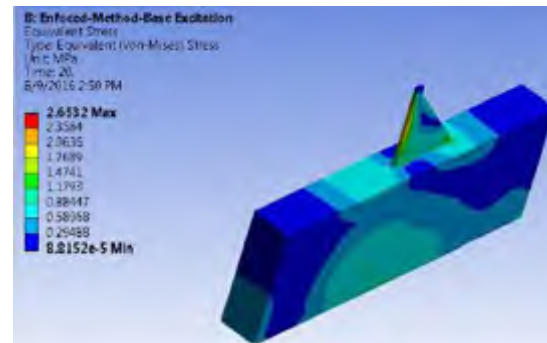
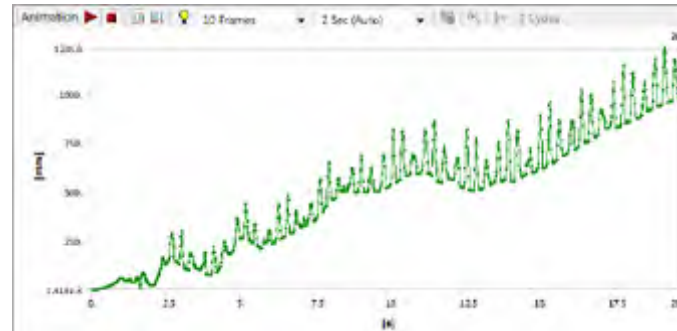
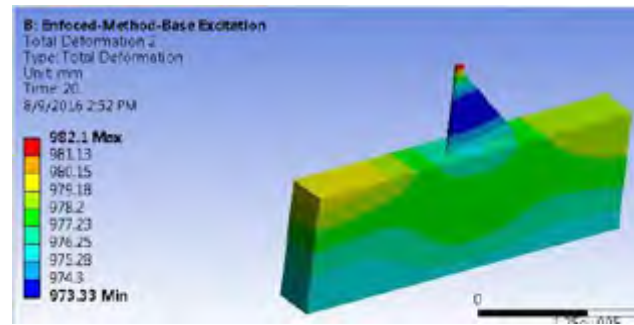
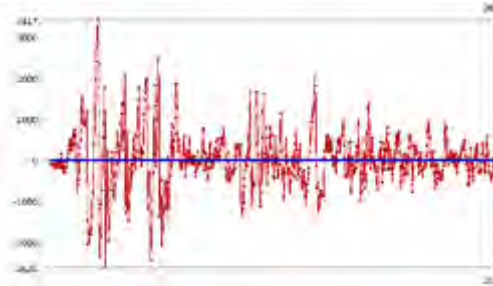
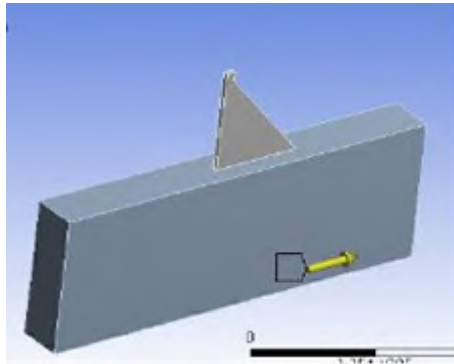
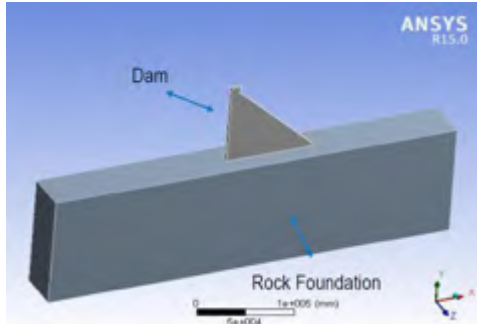


结构仿真

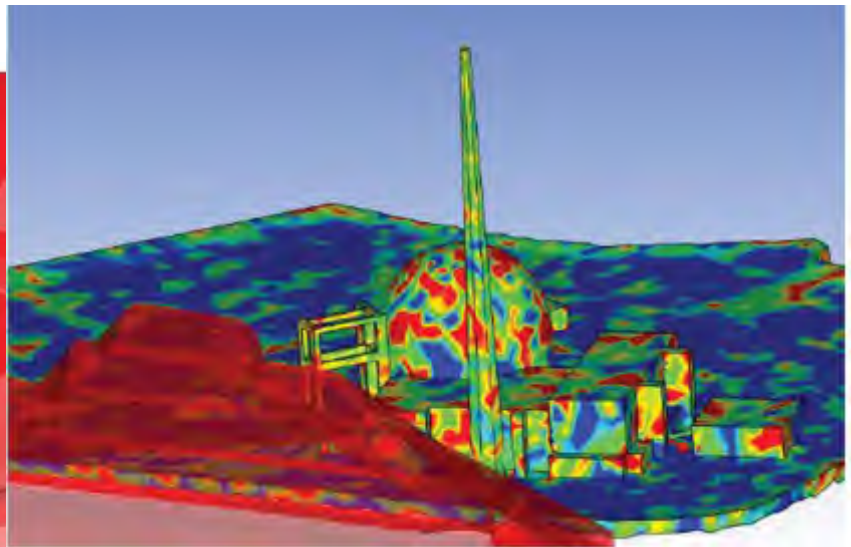
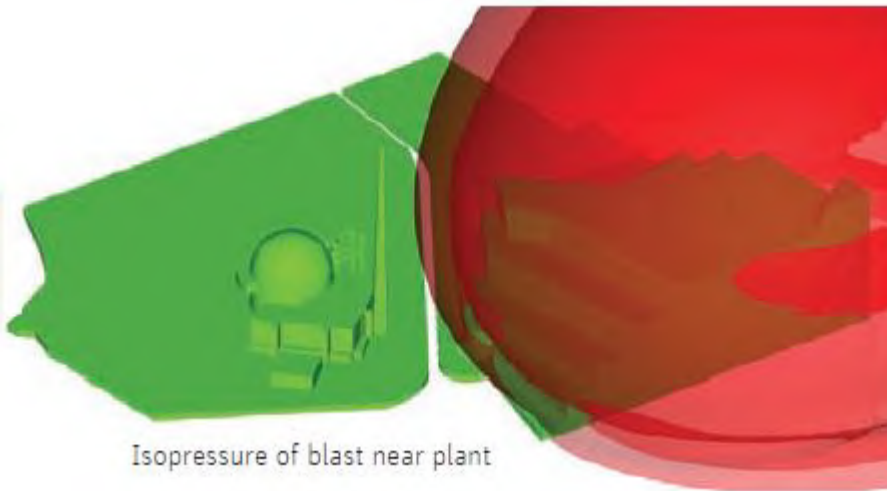
一般工况



地震



爆炸



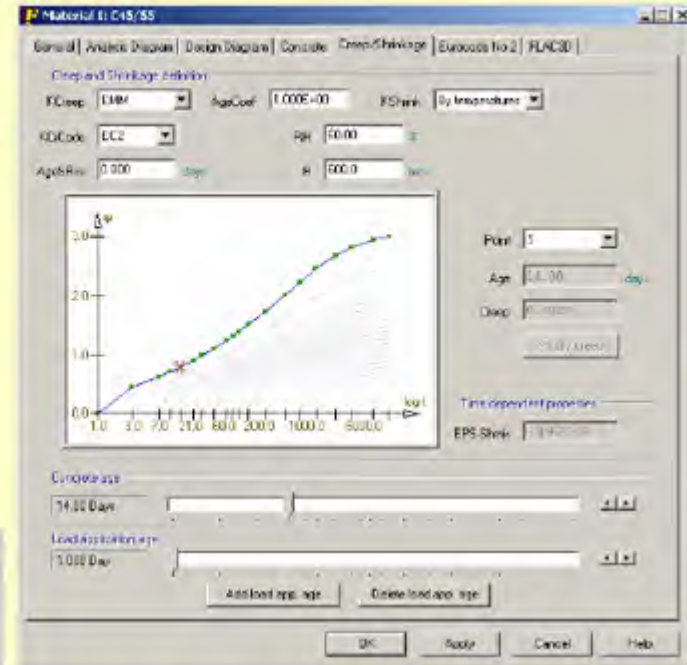
采用混凝土（蠕变）材料的桥梁建造过程仿真

- Advanced concrete modeling
 - Simplified and accurate creep modeling
 - Step by step method
 - Effective modulus method
 - American Code ACI 209R-92
 - EHE
 - CEB -90 CODE
 - EUROCODE 2

*Non-Linear
Materials*

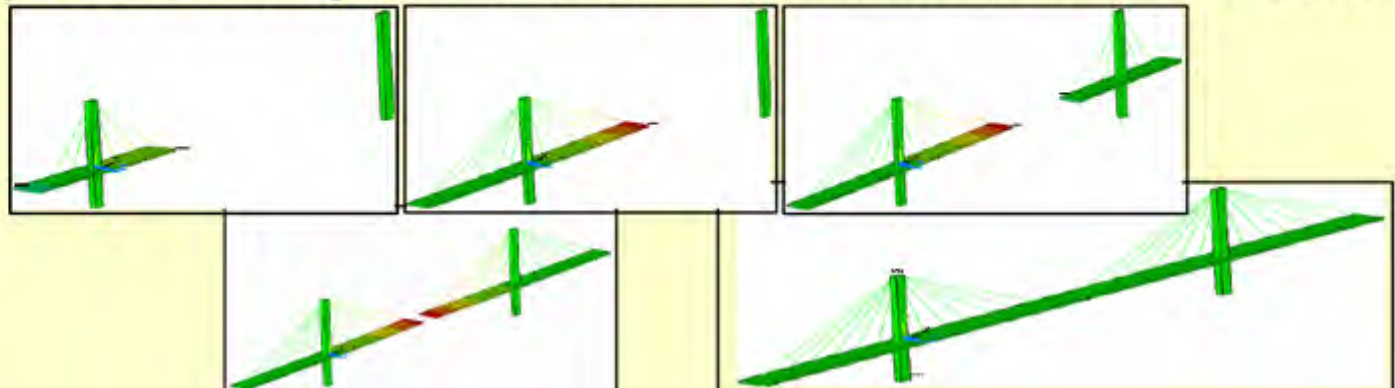
Creep and Shrinkage definition

KCreep



- Construction process through material definition: Material birth and death

- ▢ Civil Preprocessor
 - ▢ Element Types
 - ▢ Materials
 - ▢ Cross Sections
 - ▢ Shell Vertex
 - ▢ Member Properties
 - ▢ Beam & Shell Properties
 - ▢ Solid Section
 - ▢ Verif. Database
 - ▢ Construction Process
 - ▢ Update Database
 - ▢ Active Time
 - ▢ Update Construction Stage



电线杆

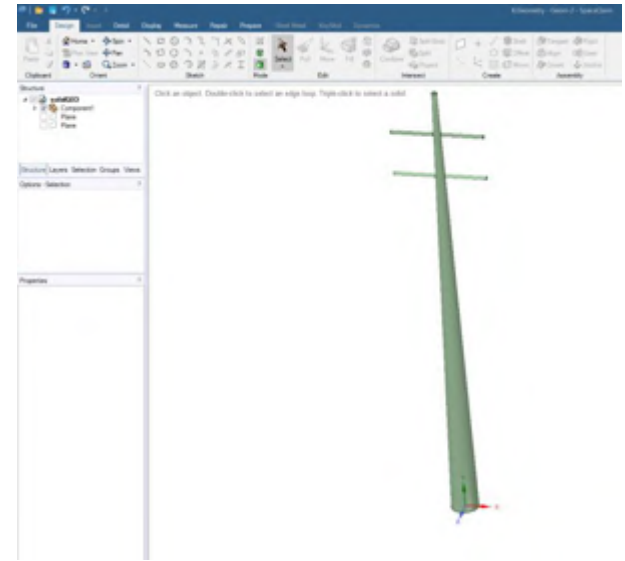
- Steel tubes
- High slenderness
- Bolted and/or welded connections
- Multiple load cases (combined)
- Fatigue



ANSYS Solution

A single workbench project with different analysis systems:

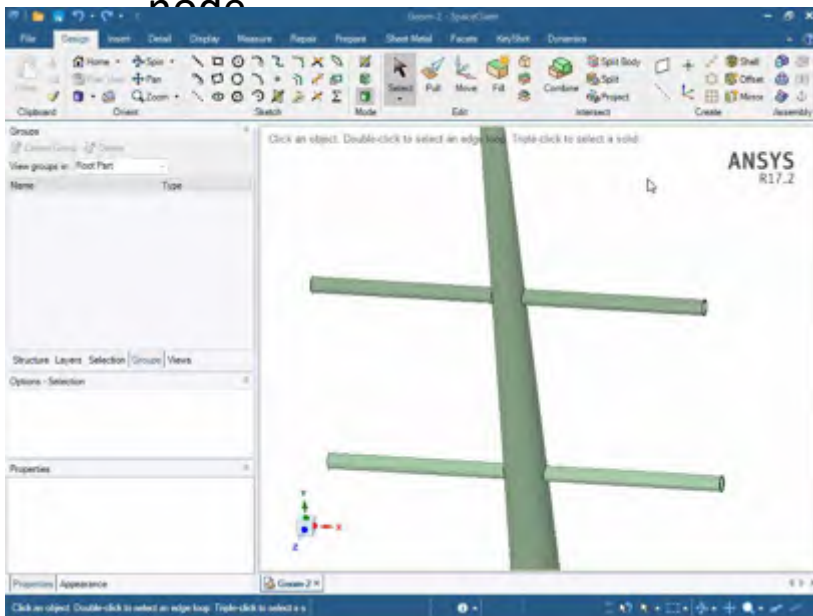
- Static
- Prestressed Modal (vibration)
- Submodel (details with Fatigue)
- Dynamic
- Load Cases Combination



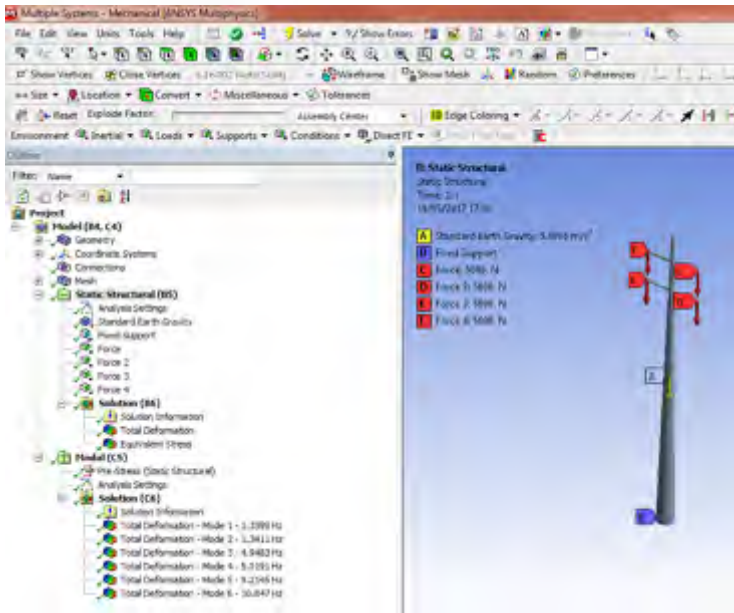
Geometry setup

ANSYS Spaceclaim DirectModeler

- Initial geometry solid 3D
- Midsurface extraction
- Clip with volume to isolate one node

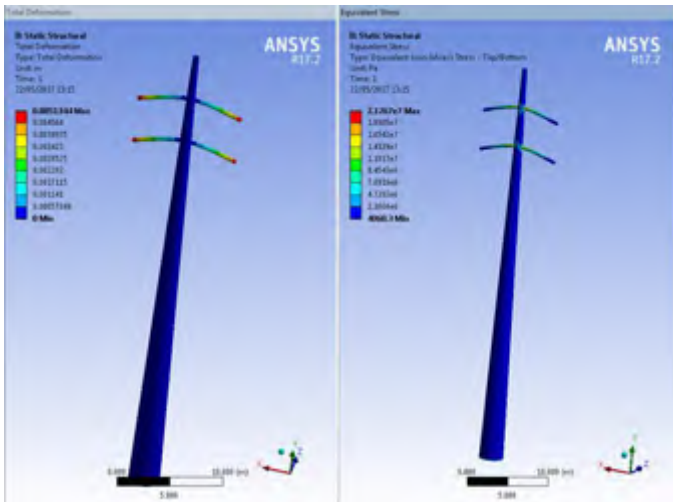


Static and Prestressed Modal

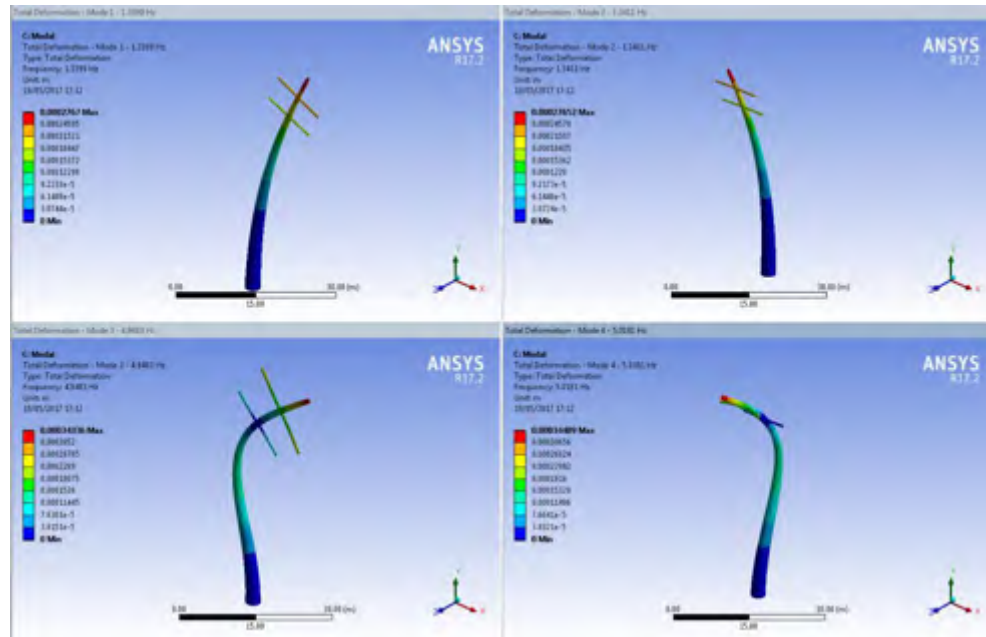


Static load

- Earth Gravity
- Load from cables
- Fixed at the bottom



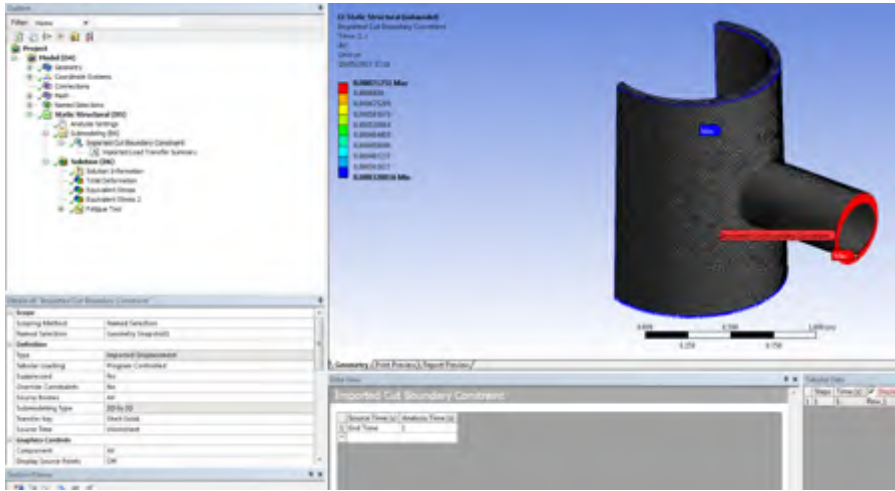
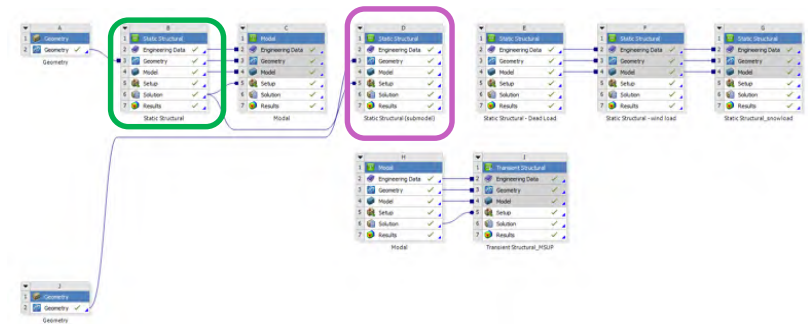
Static Analysis results



Mode shapes (first 4)



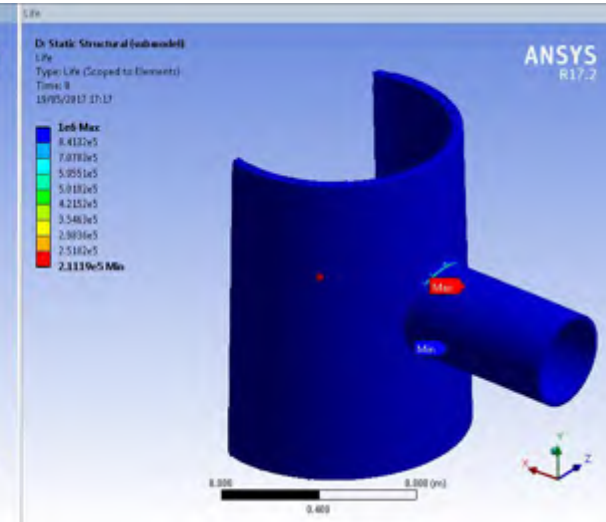
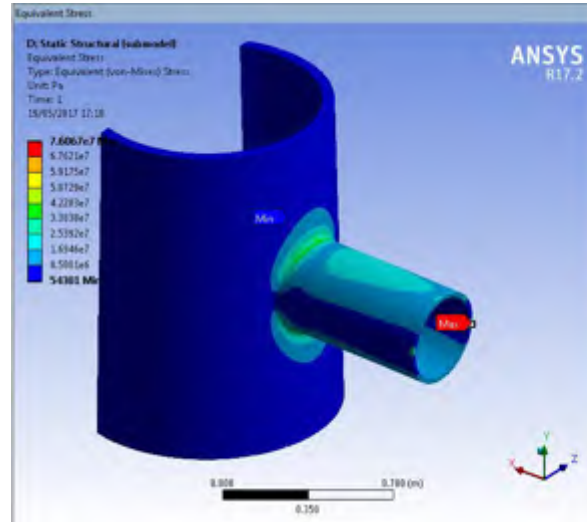
Submodel with Fatigue



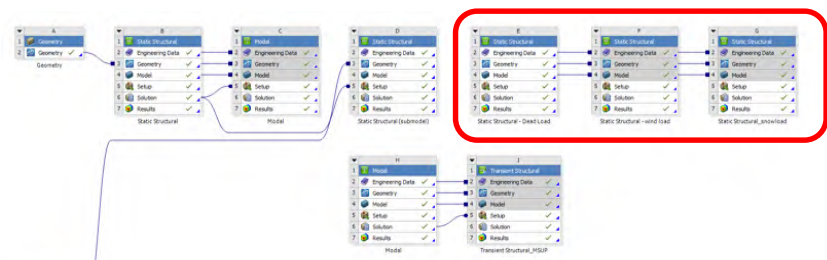
Load (displacements) are transferred from the Static Analysis (cut boundaries)
 Note (added)

Results:

- Equivalent stress
- Fatigue Life



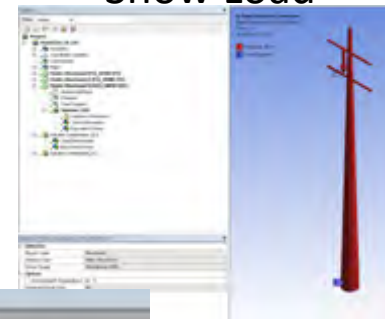
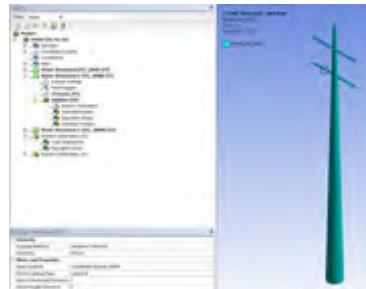
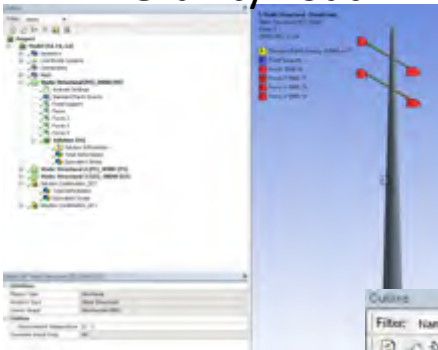
Load Cases Combination



Gravity Load

Wind Load

Snow Load



Outline

Filter: Name

- Project
 - Model (E4, F4, G4)
 - Geometry
 - Coordinate Systems
 - Connections
 - Mesh
 - Static Structural (ES_DEAD (ES)
 - Static Structural 2 (FS_WIND (FS)
 - Static Structural 3 (GS_SNOW (GS)
 - Solution Combination_SG2
 - Total Deformation
 - Equivalent Stress

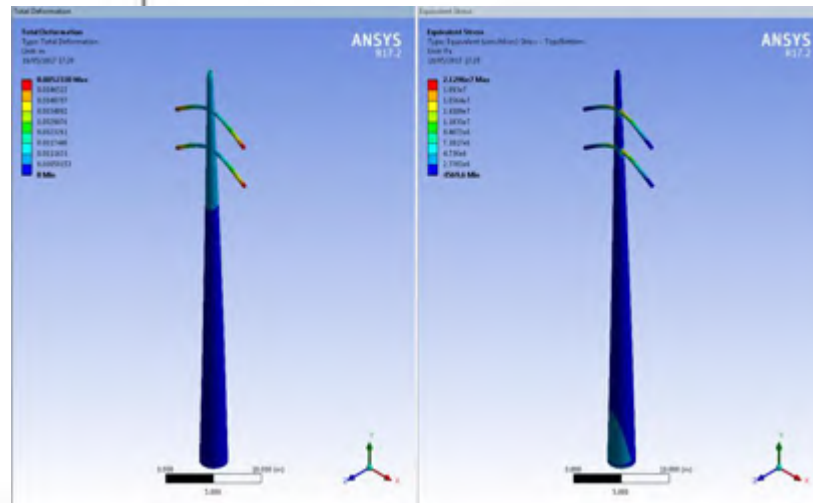
Workbench

Solution Combination_SG2

Right click on the grid to add, modify and delete a row.

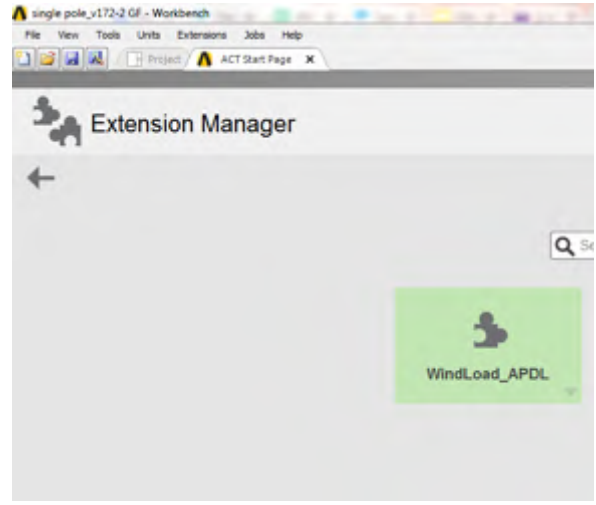
	Coefficient	Environment Name	Time
<input checked="" type="checkbox"/>	1	Static Structural (ES)_DEAD	End Time
<input checked="" type="checkbox"/>	0.6	Static Structural 2 (FS)_WIND	End Time
<input checked="" type="checkbox"/>	0.5	Static Structural 3 (GS)_SNOW	End Time

- Results are linearly combined
- No need of resolve
- Wind load applied via ACT



WindLoad ACT

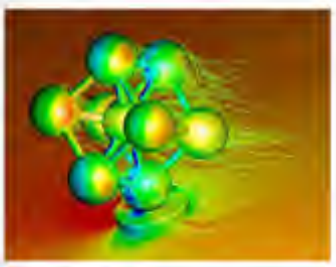
- ACT extension free to download from our App Store
- It calculates the pressure exerted to structure (shell model) based on the velocity profile
- The pressure is then applied as varying pressure load



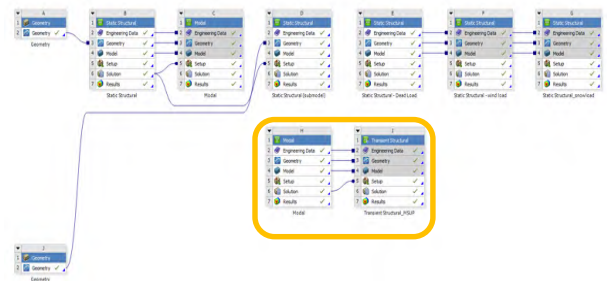
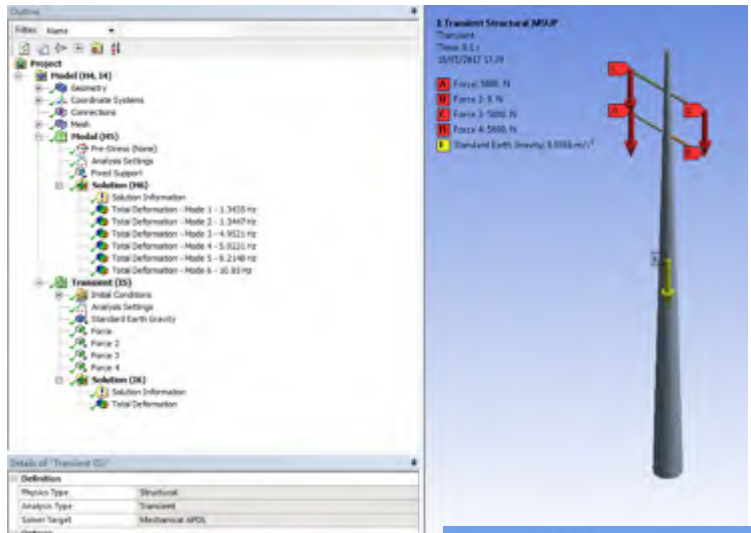
Windloading

$$F_d = \frac{1}{2} \rho v^2 A C_d$$

- F_d = Wind Loading Force
- ρ = Air density
- v = Wind speed
- A = Surface area
- C_d = Drage Coefficient (not use)

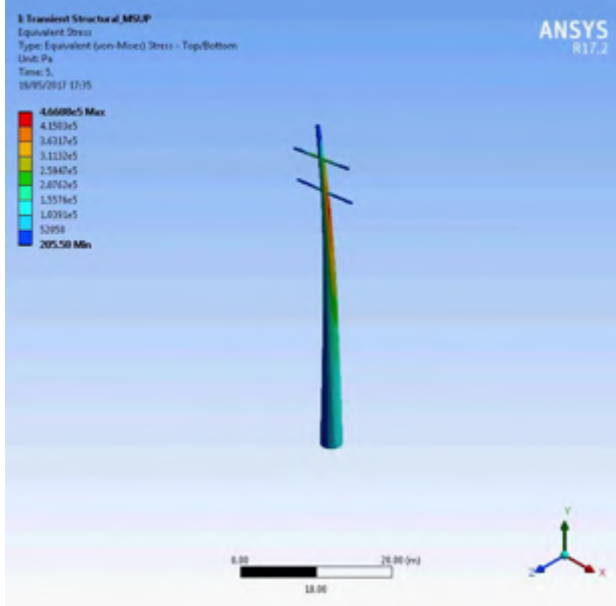
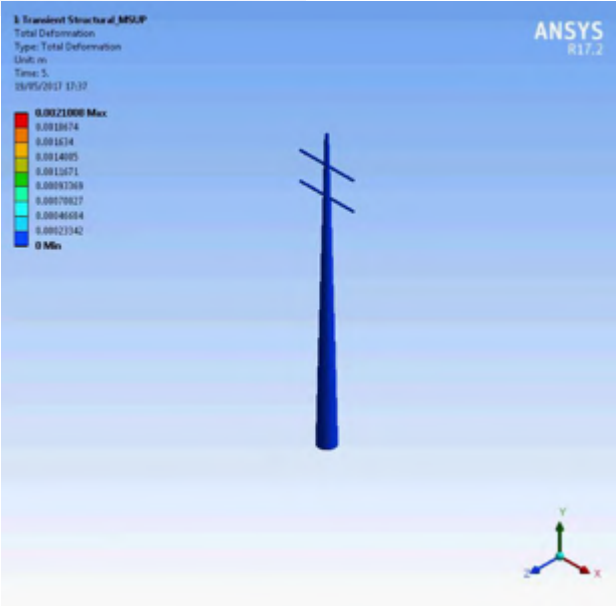


Dynamic Analysis



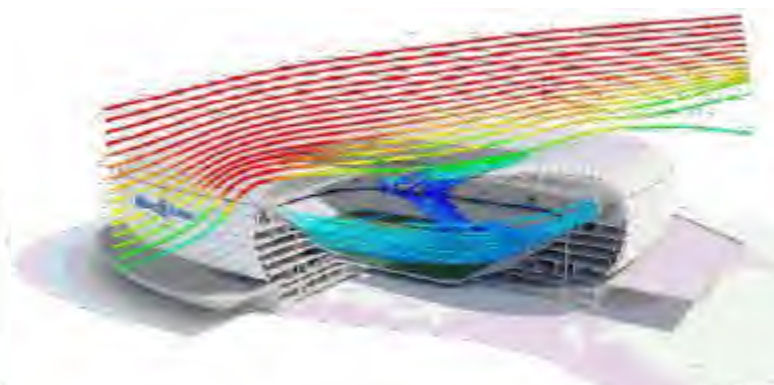
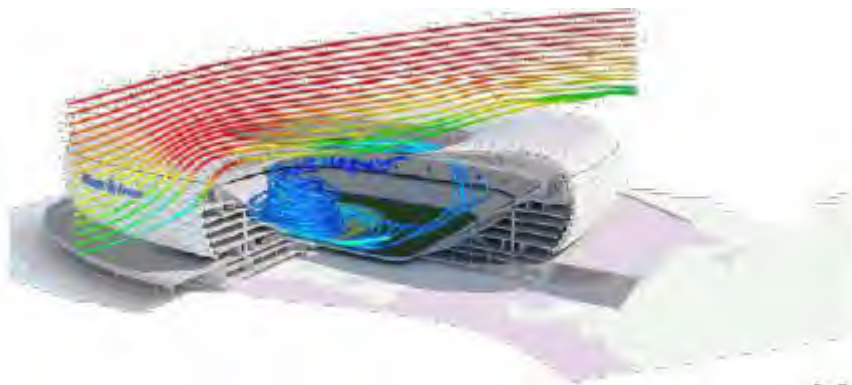
Boundary conditions:

- Same as in the static analysis
- Load from one cable is removed at 0.1sec
- Structure is then set free to vibrate

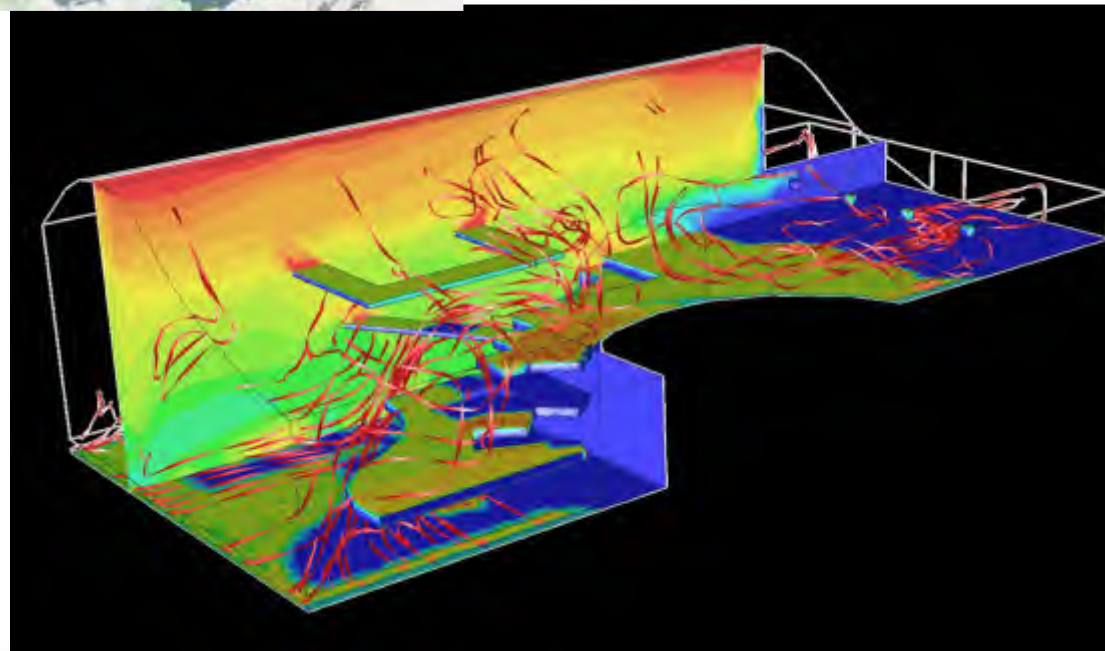


流体仿真

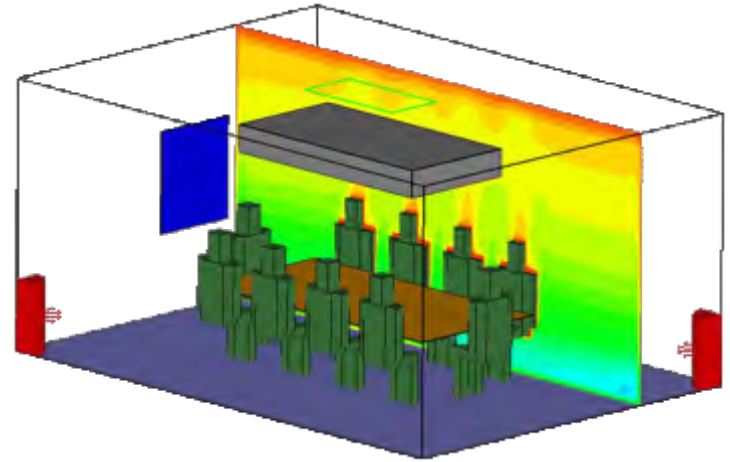
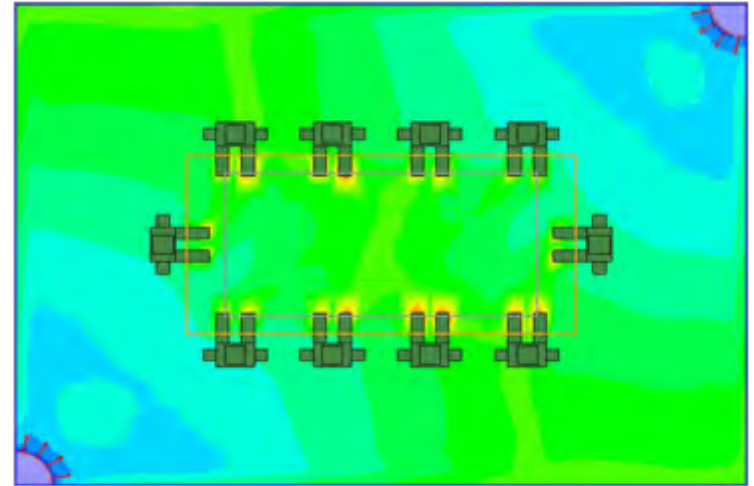
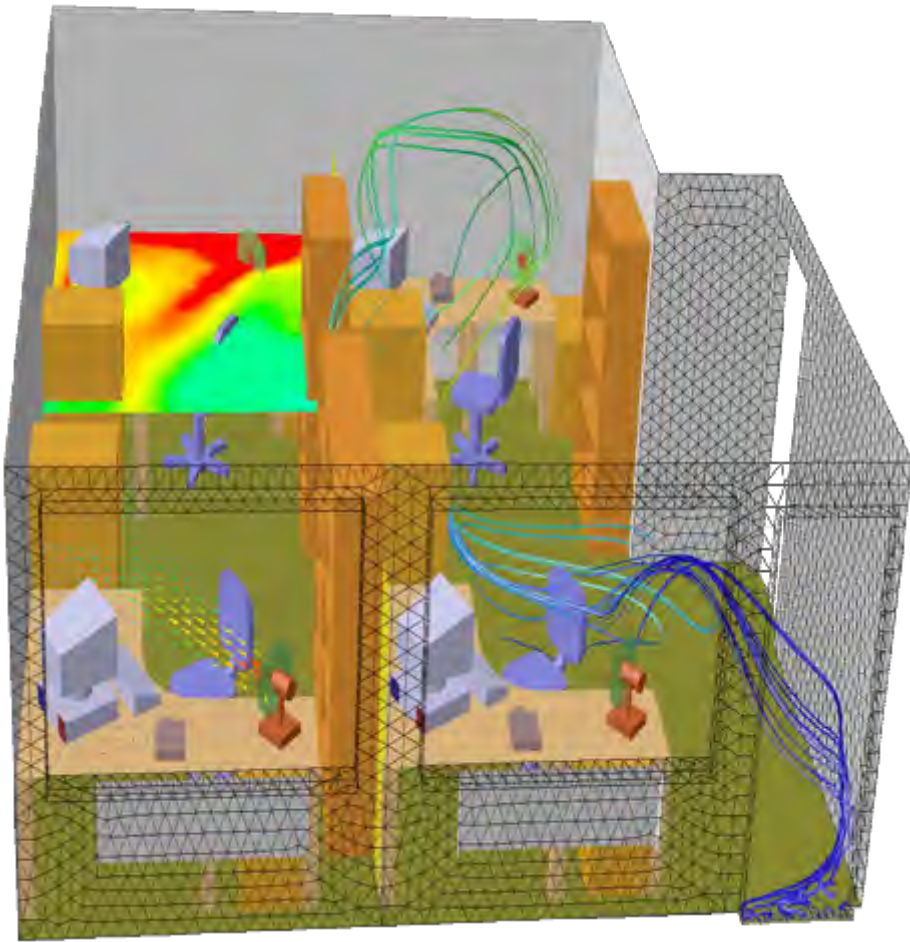
大型露天场馆的通风



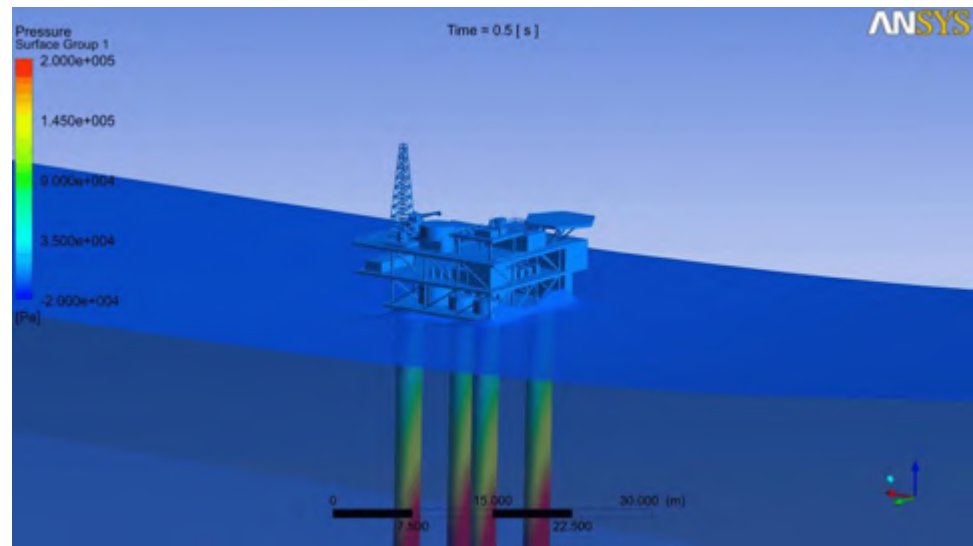
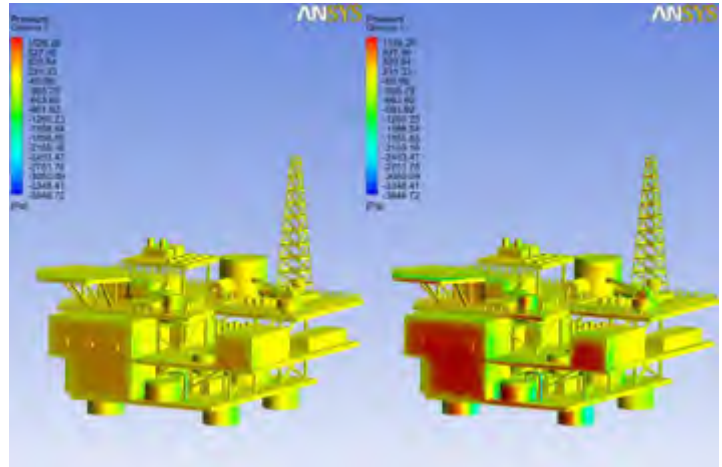
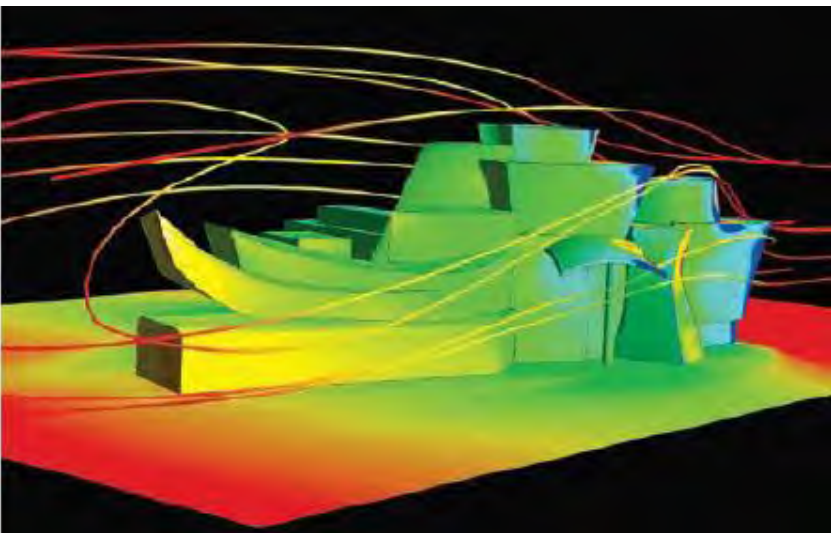
大型密闭建筑物内的环境控制



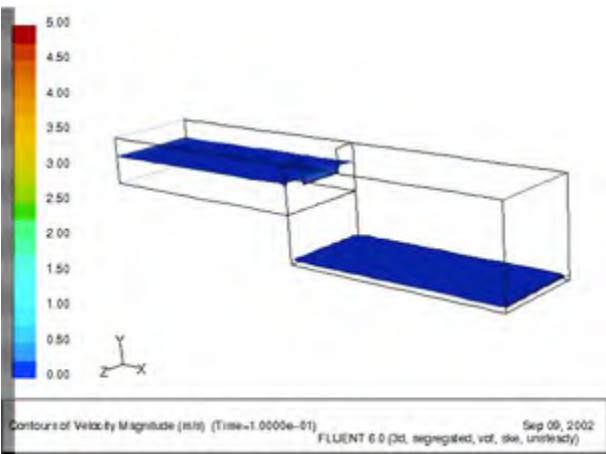
房间舒适度分析



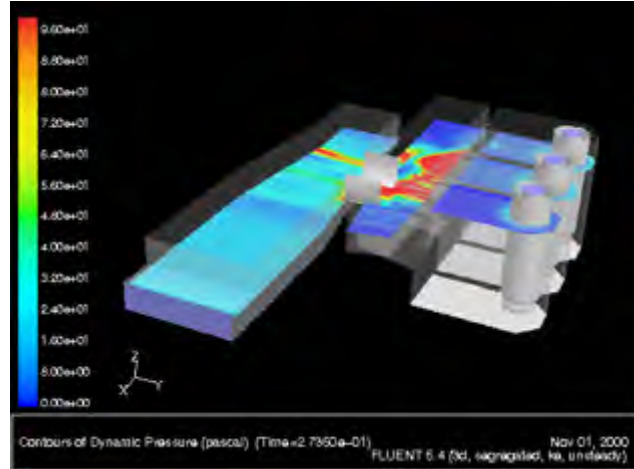
建筑物风载计算



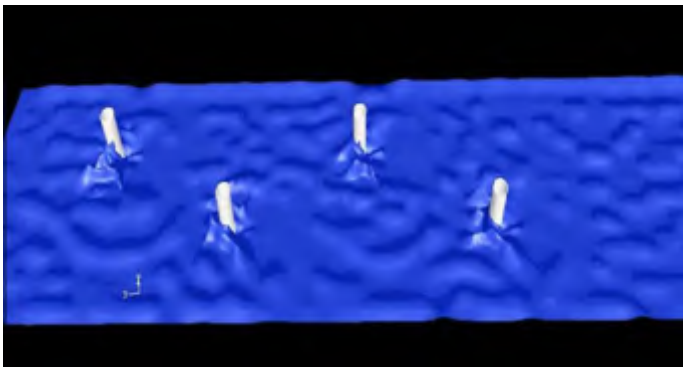
水管理



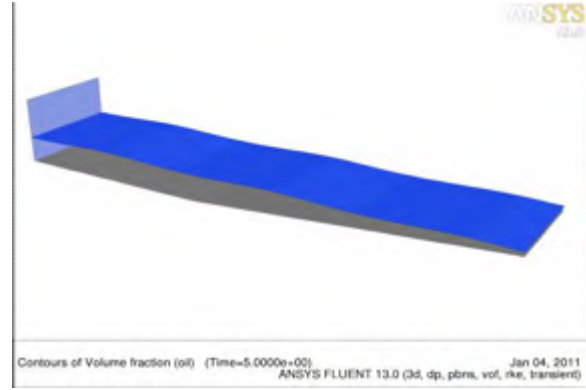
Weirs



Pump Station

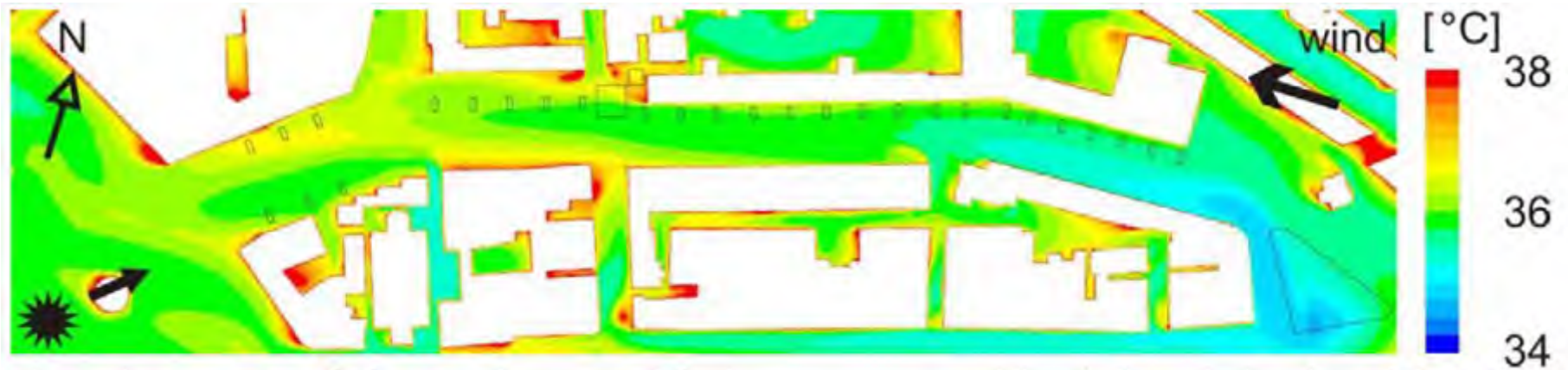
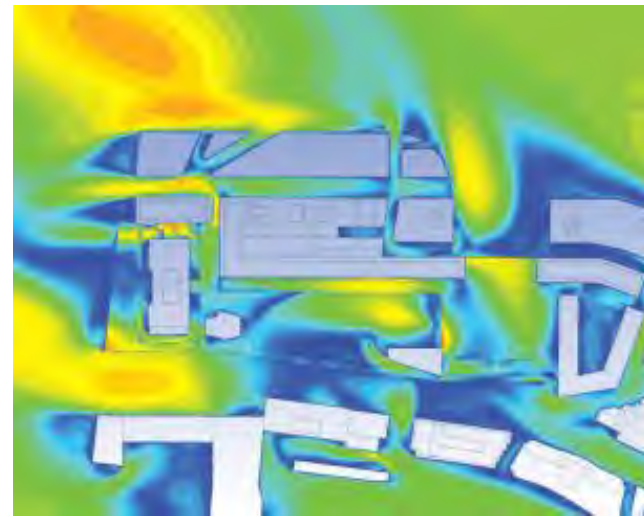
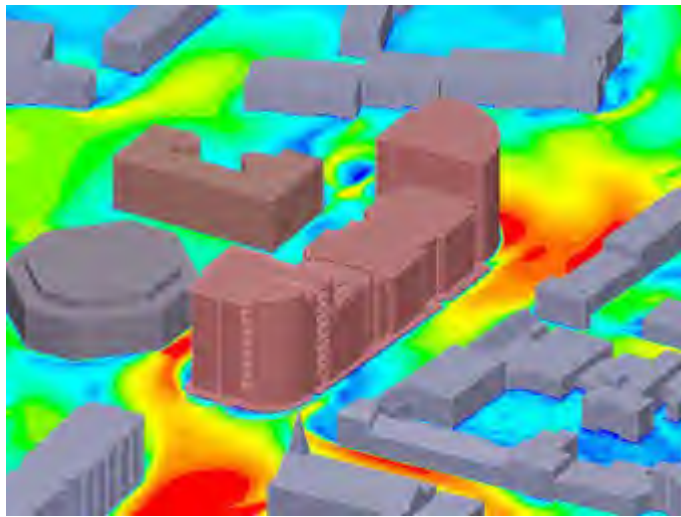


Scouring

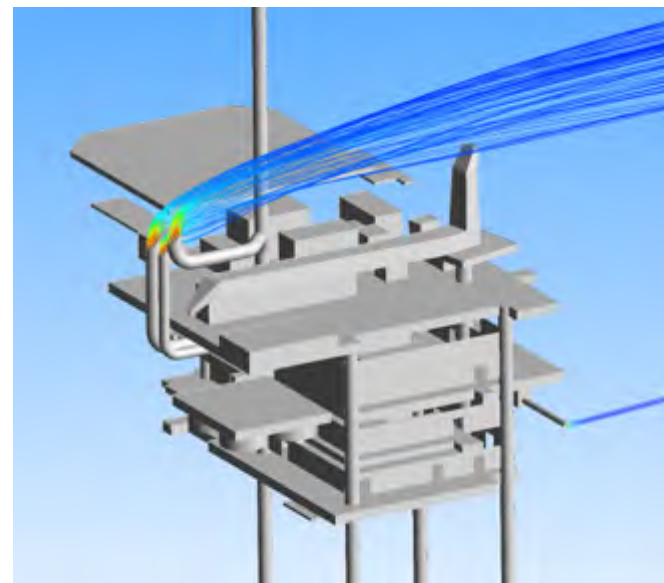
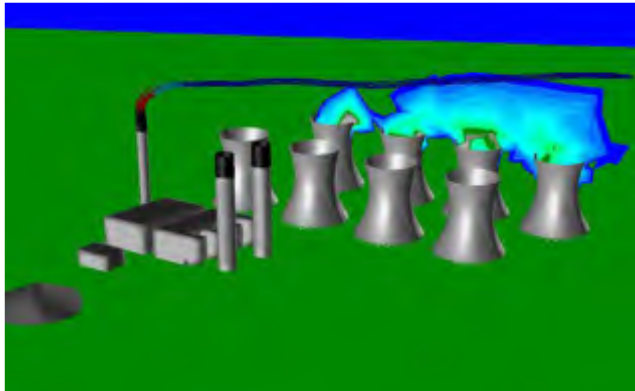


Oil Spilling

街区风道



烟气扩散

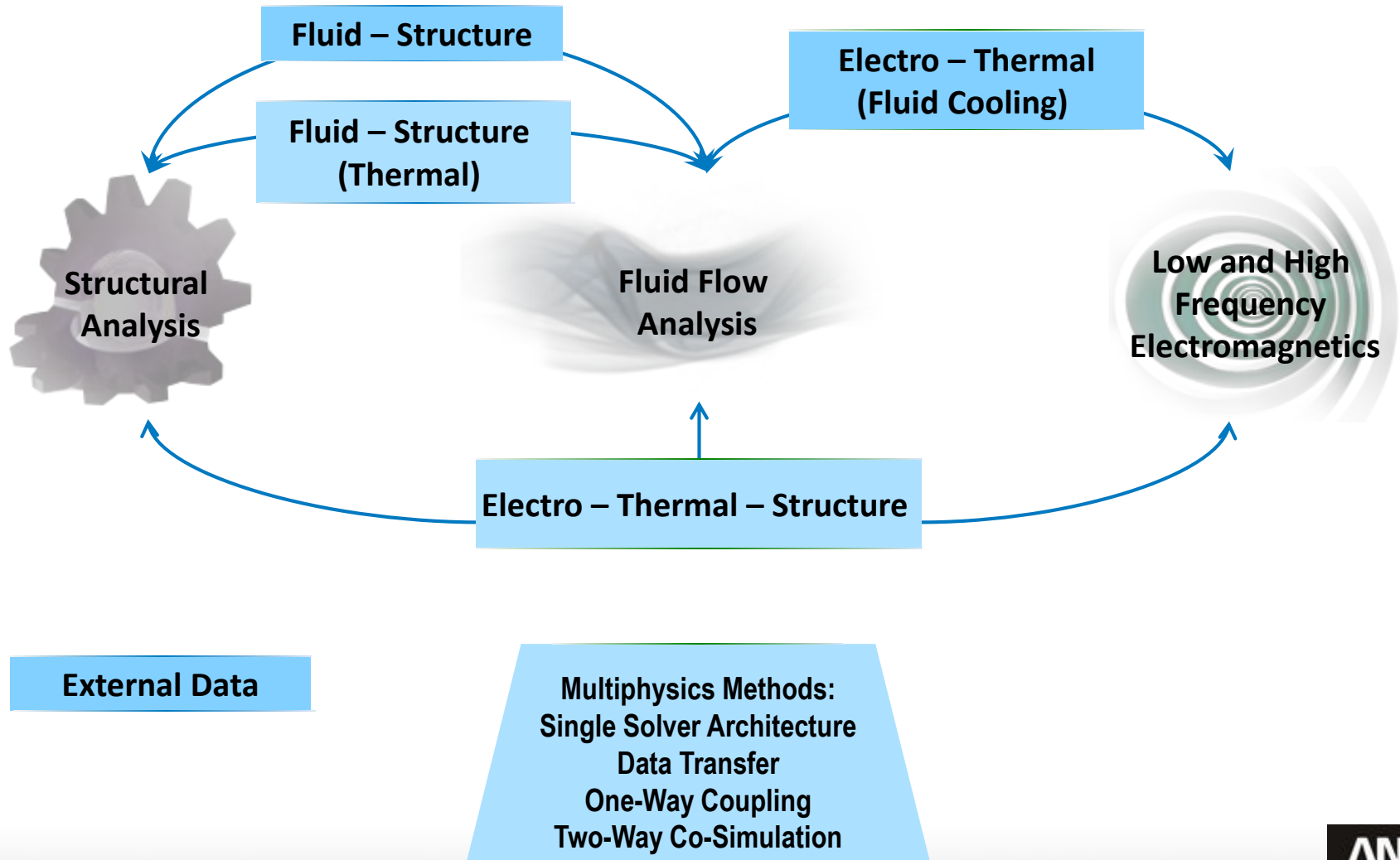


World Trade Center Collapse



流固耦合

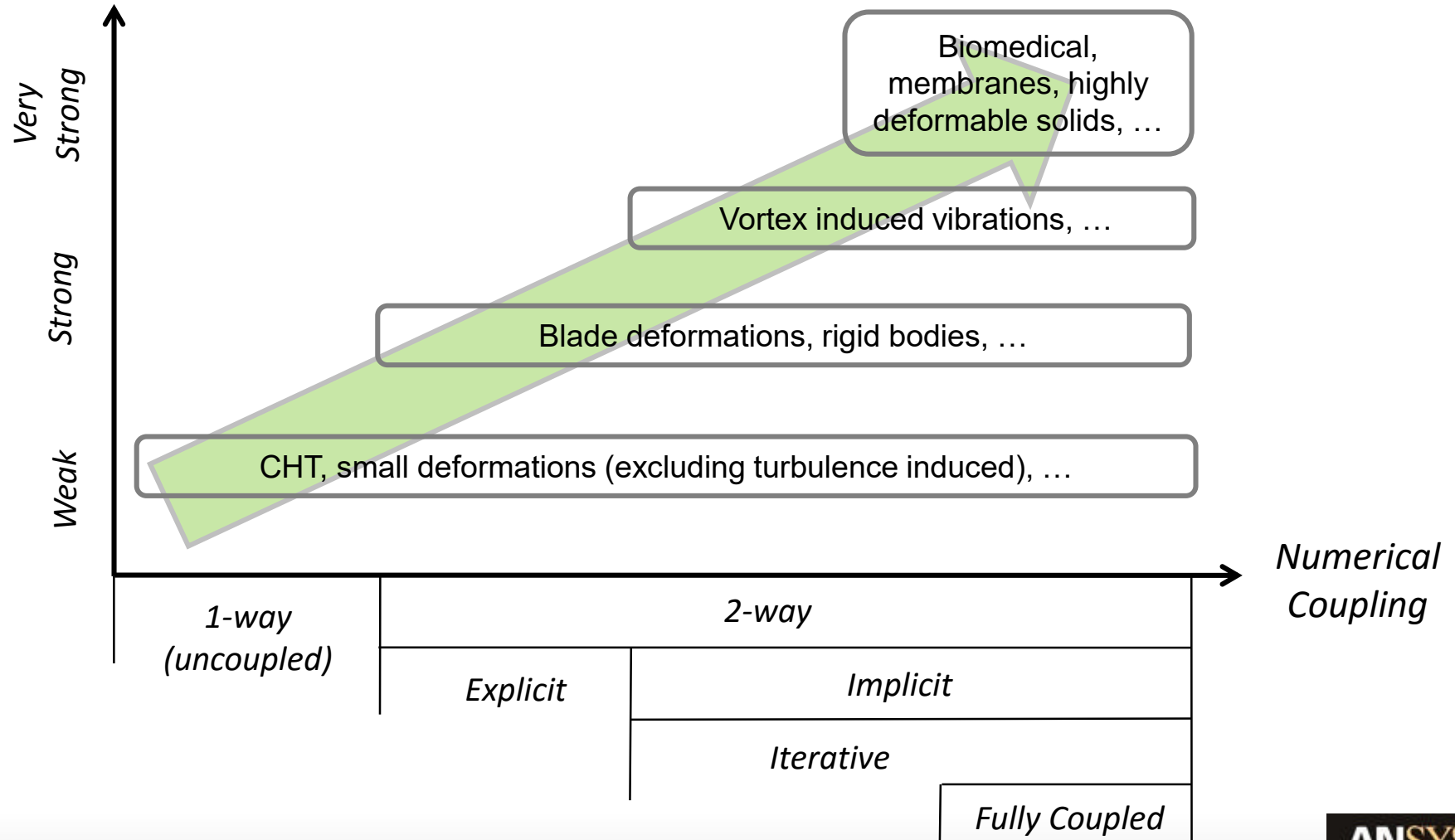
ANSYS多物理仿真



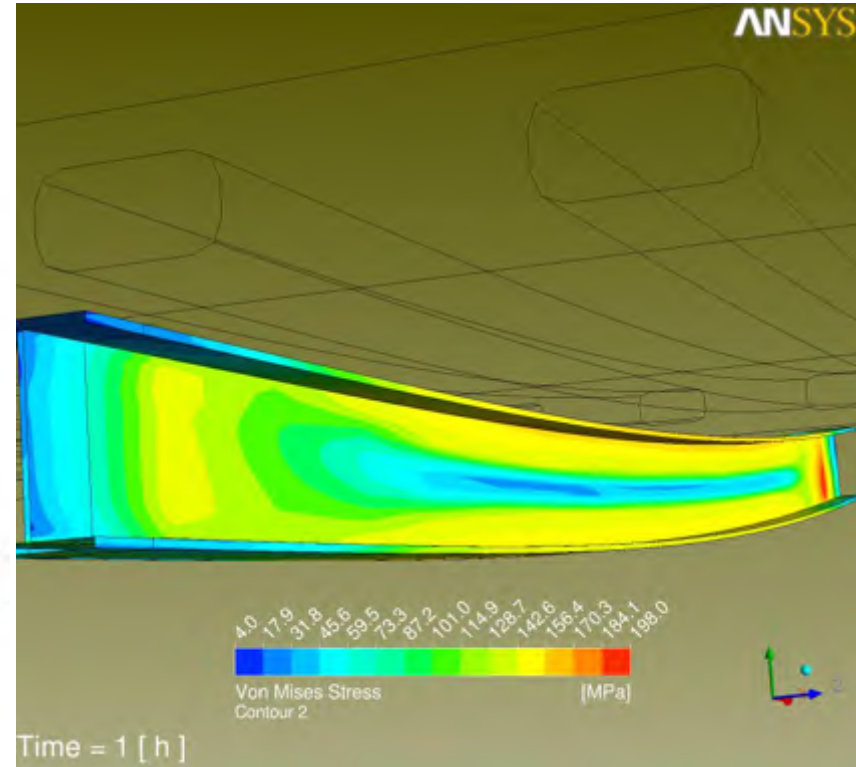
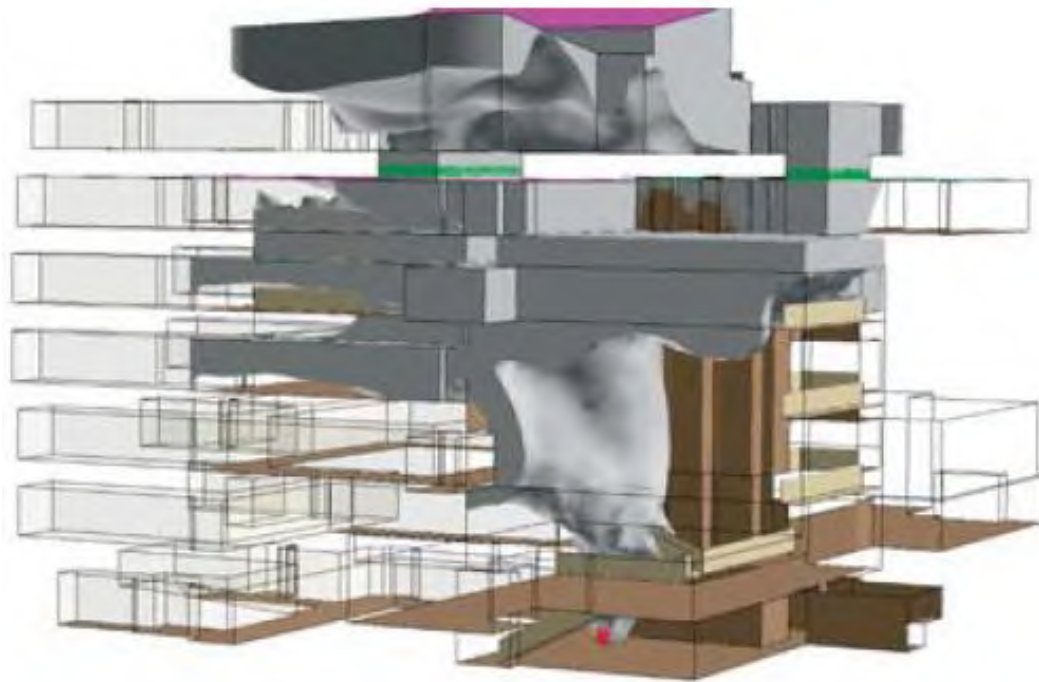
FSI Workflows

Physical Modeling Approaches

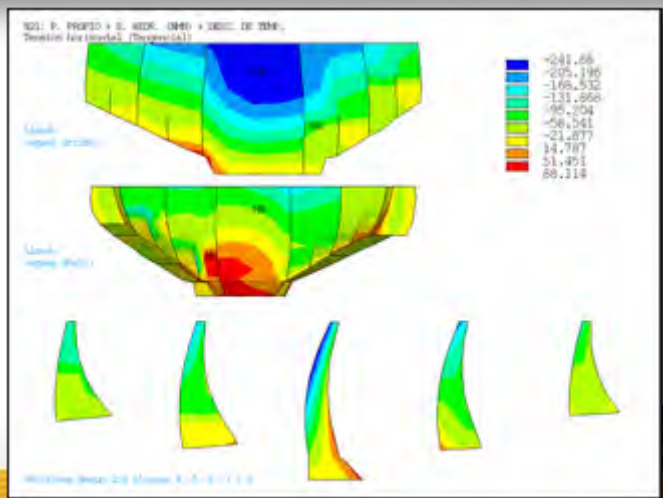
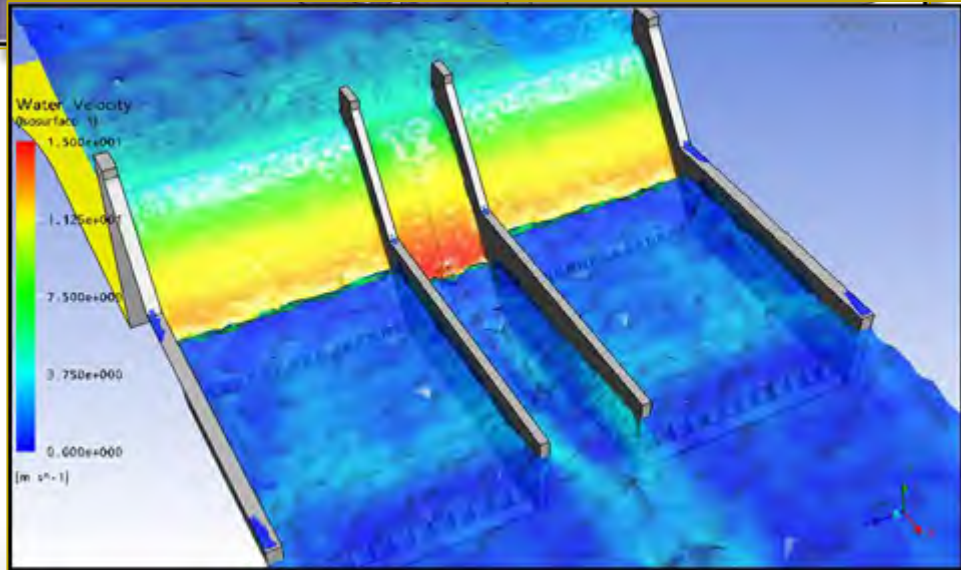
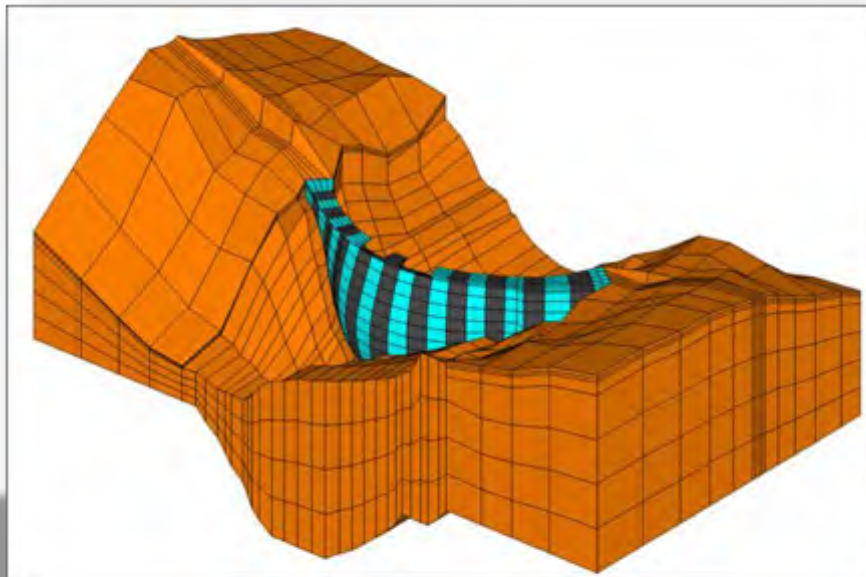
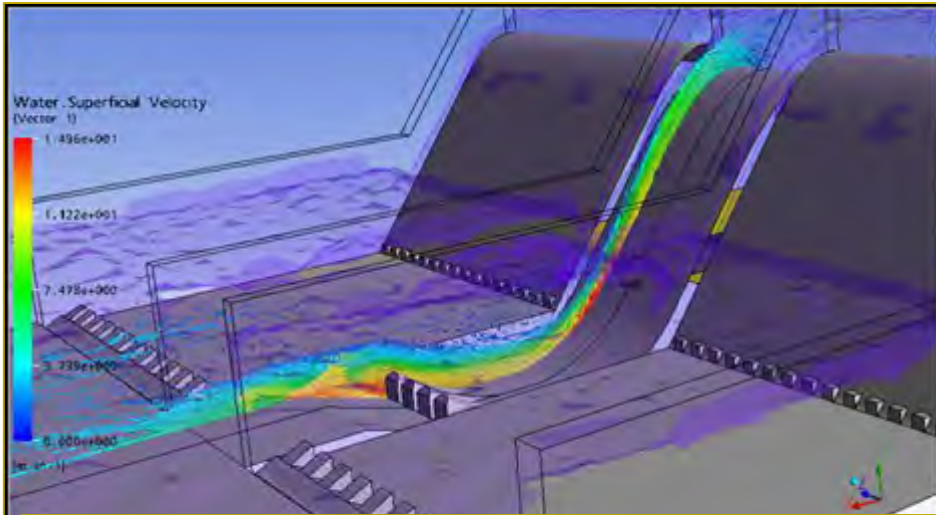
Coupling



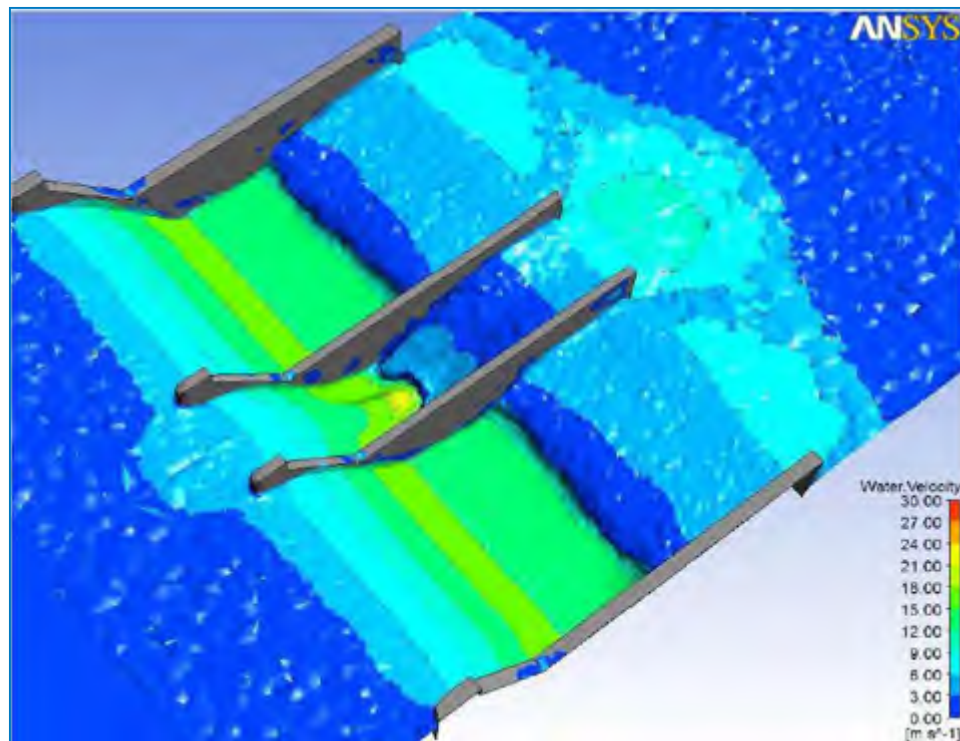
火灾



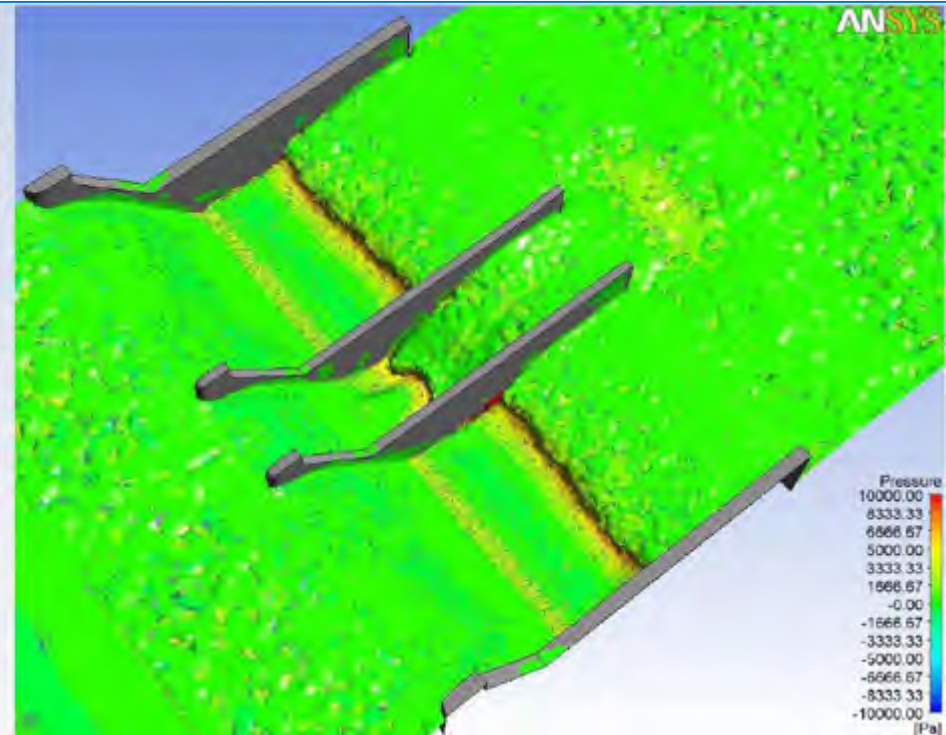
Dam: Fluid + Structural Analysis



Dam: Fluid + Structural Analysis

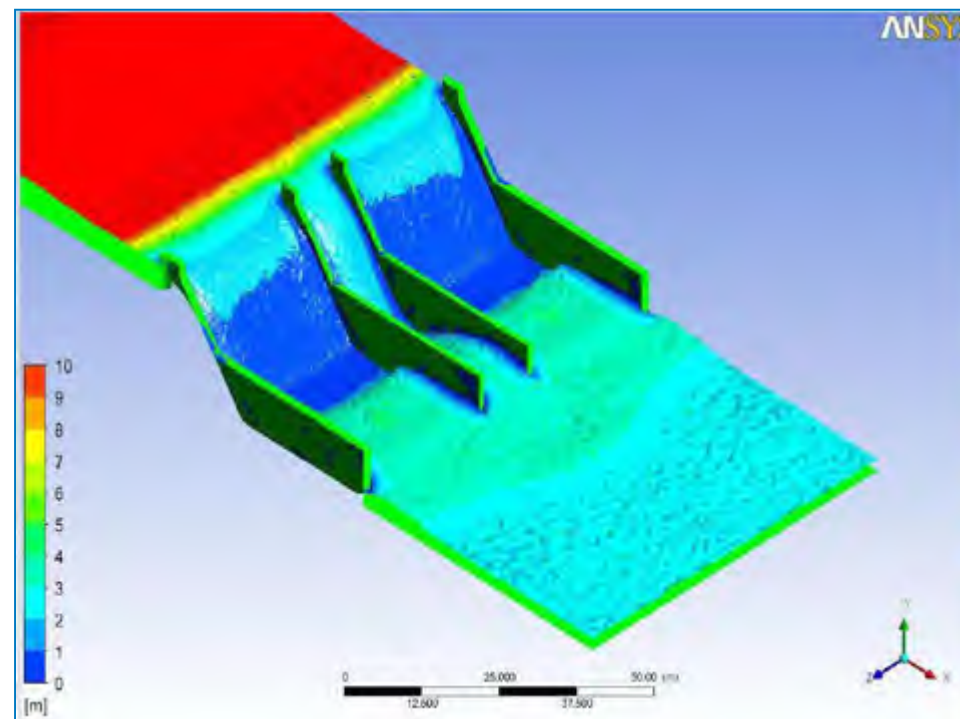


Water Velocity

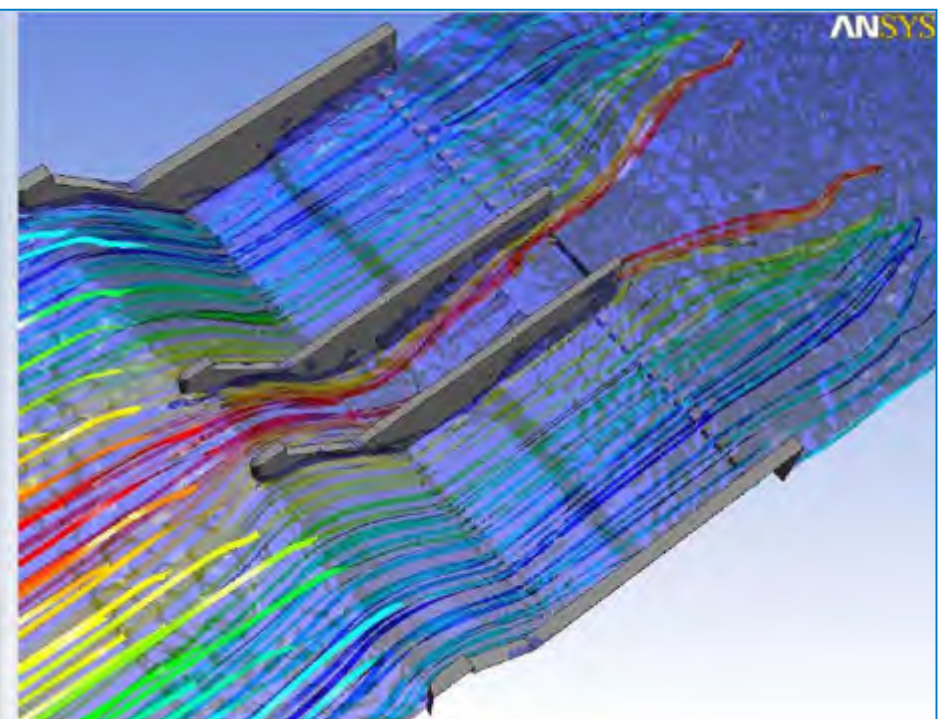


Pressure

Dam: Fluid + Structural Analysis



Fluid Elevation



Streamlines

ANSYS



仿真
新时代

2017 ANSYS用户技术大会

中国·烟台

感谢聆听



ANSYS-China