



Life Is On Innovation Summit

Life Is On | **Schneider**
Electric

Life Is On | **Schneider**
Electric



Data Center In the Cloud and at the Edge

数据中心在云也在边

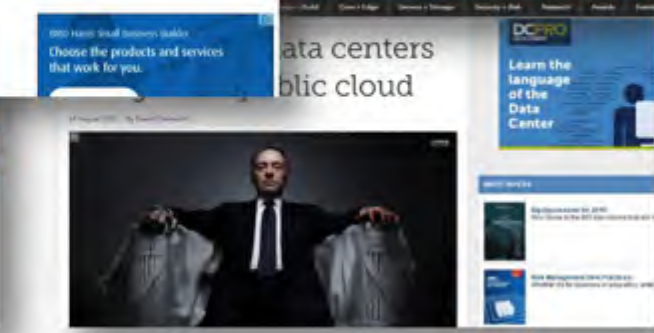
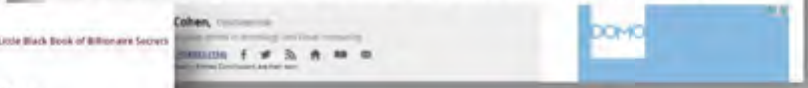
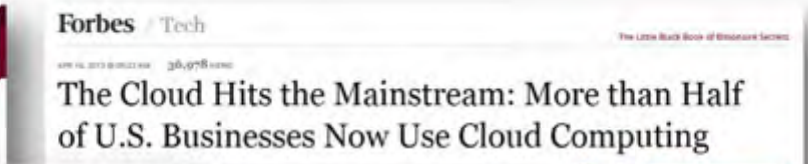
Life Is On

Schneider
Electric

Life Is On

Schneider
Electric

Not too long ago, our industry believed all computing would eventually centralize to the cloud



Confidential
Schneider

Recent industry moves showing a pendulum shift back, creating a decentralized, hybrid computing ecosystem

is building hyper-scale data centers enough?

no, it's capital intensive and expensive to operate.

smarter approach: build an extensive infrastructure of micro DCs (1-10s of servers with several TBs of storage, \$20K-\$200K/mDC) and place them everywhere

Microsoft

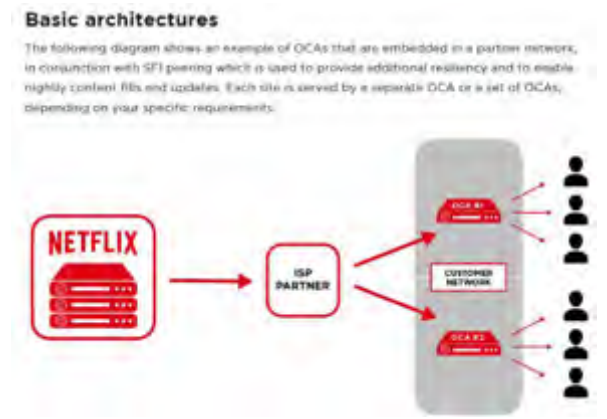
May 15, 2015

Inc.

Dropbox to Amazon: We're Taking Our Data and Going Home

With half a billion users and 100,000 terabytes of data, Dropbox decided it's grown up enough for its own cloud.

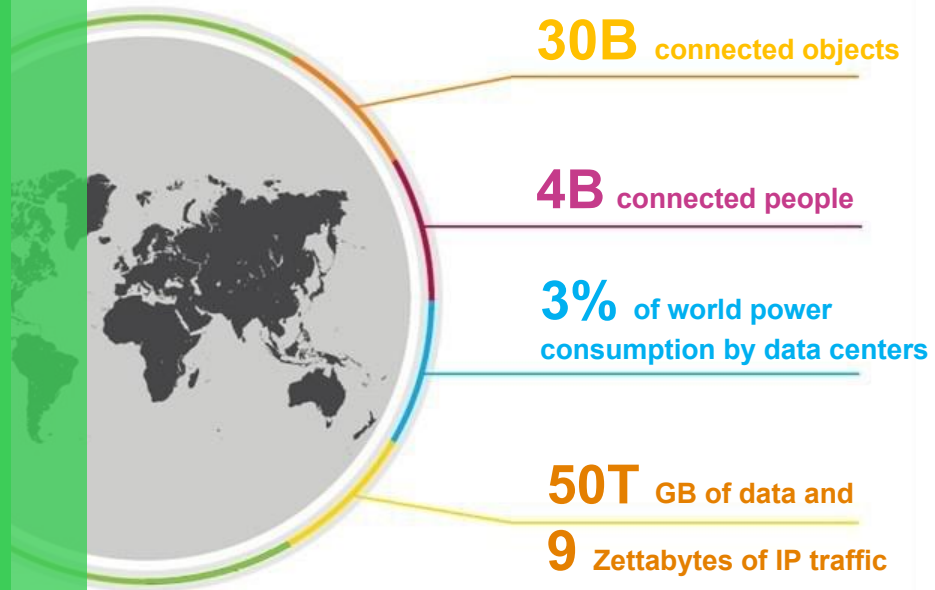
March 15, 2016



By 2020, the world will be a different place...

...it is undergoing profound transformation to support the enormous data volumes and processing demands that are being generated by the Internet of Things (IoT).

The world in 2020...



Sources: Gartner, IDC, Uptime Institute, Cisco

Why is there a massive move to the cloud?

- Speed
- Scale
- Cost

Confidential Property of
Schneider Electric |

Page 6

*...the main building block
of clouds are centralized
hyperscale data centers...*



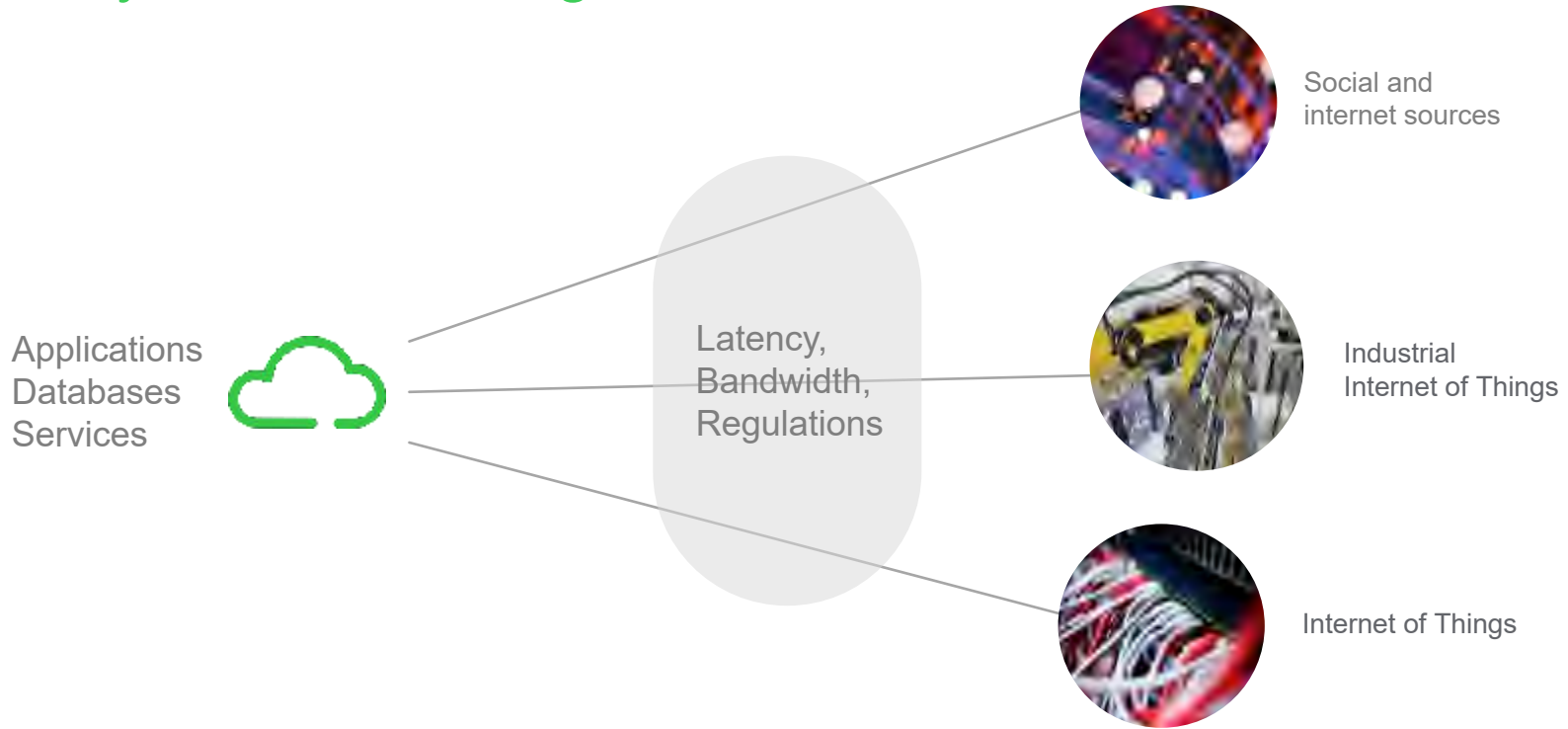
Life Is On

Schneider
Electric

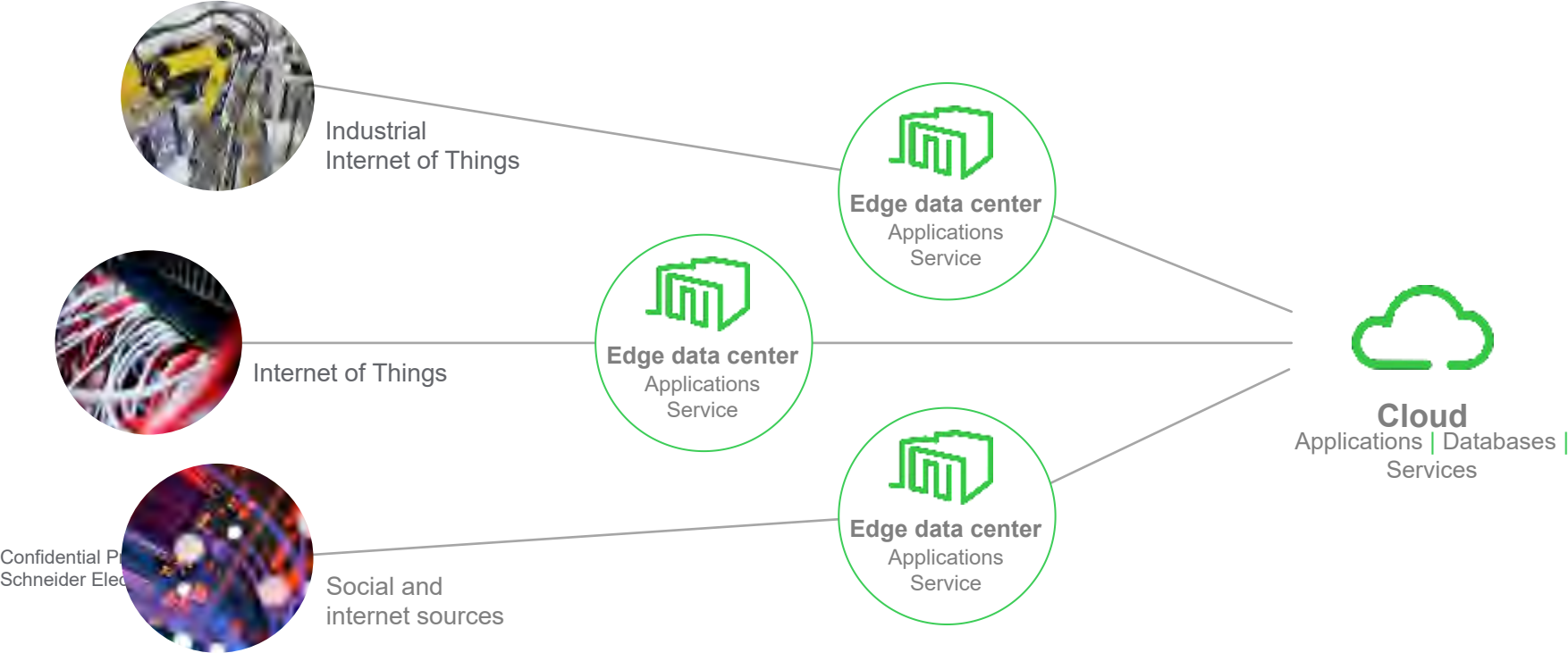
Life Is On

Schneider
Electric

The typical cloud network architecture has shortfalls: latency, bandwidth, regulations

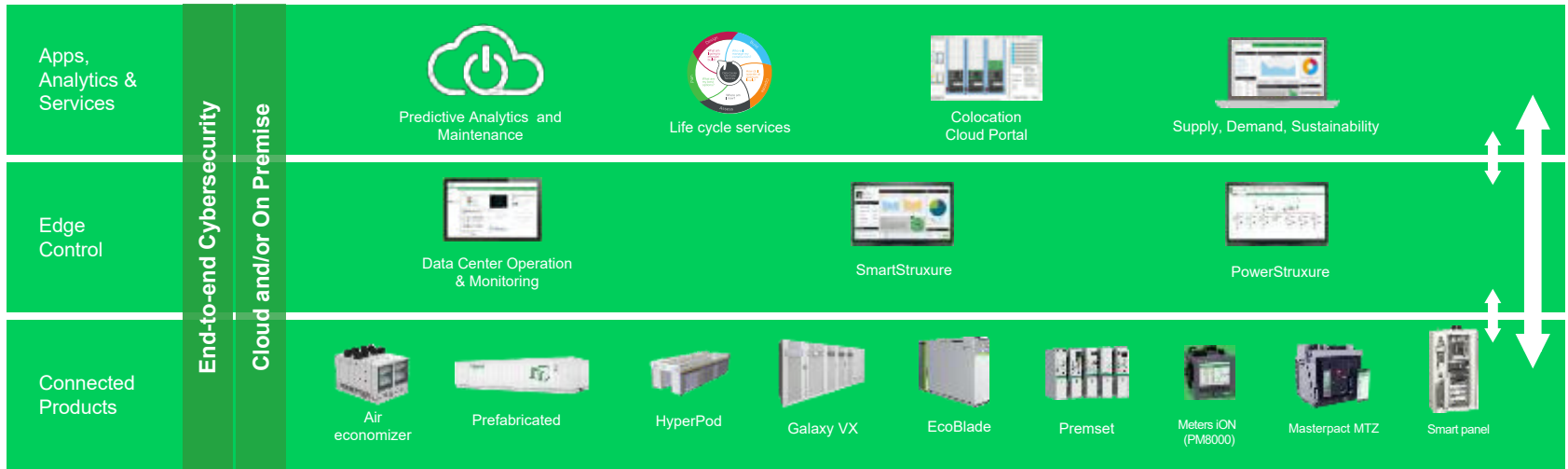


Edge solutions address these issues by putting applications and services closer to users and “things”



Confidential P
Schneider Elec

EcoStruxure Platform



The Internet of Things and analytics will enable a more effective way to manage and maintain these data centers



Traditional data collection



Monitoring & analytics in the cloud



Smart connected "Things" at the edge



Confidential Property of Schneider Electric |

The future is moving to a cloud architecture of centralized, regional, and localized edge data centers

Centralized cloud data centers
(Public or Private)



Confidential Property of
Schneider Electric |

Page 11

Augmented with localized
'edge' data centers



Leveraging IoT-enabled
data center management



Data Center

In the Cloud and at the Edge

Ensuring
Life Is On
through data center
infrastructure innovation

Life Is On | **Schneider**
Electric



Sandra Ng
Group Vice President
Practice Group
IDC Asia/Pacific



Heng Wai Mun
Head of Hosting and Cloud
Services Business Products
Group Enterprise
Singtel



Adrian McPaul
Senior Vice President
Regional Head of
Critical Services, Asia
Citibank



Mark Bidinger
President
Cloud & Service Provider
Segment



Tung Meng Fai
Director Infocomms
& Media Division
Economic
Development Board
Singapore, EDB



David Johnson
Executive Vice President
IT Division



Moderator / Presenter



Life Is On Innovation Summit

Life Is On | **Schneider**
Electric

Life Is On | **Schneider**
Electric